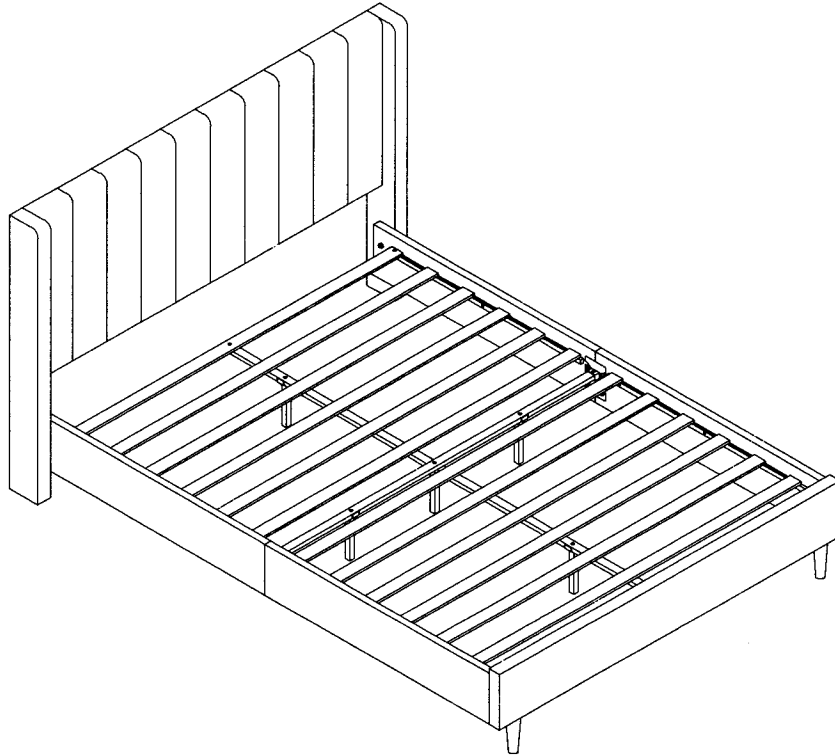


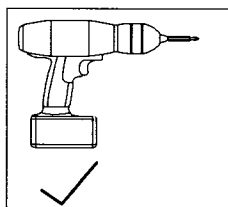
STANDARD BED



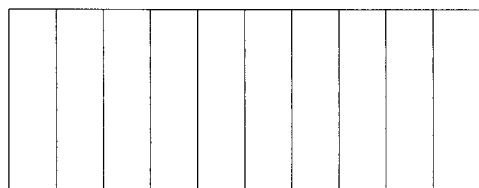
ITEM NUMBER:903H

IMPORTANT NOTE

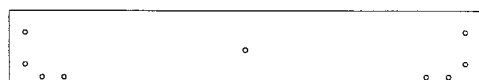
1. **ALL OTHER PART INSIDE THE HEADBOARD
PLEASE OPEN THE ZIPPER OF HEADBOARD, AND TAKE OUT ALL
OTHER PART BEFORE ASSEMBLY.**
2. FOR THE PROTECTION OF YOUR FURNITURE, PLACE ALL PARTS ON A
CLEAN AND SMOOTH SURFACE TO PREVENT ANY DAMAGE.
3. DO NOT USE POWER TOOLS TO ASSEMBLE THE BED.
4. PLEASE PERIODICALLY CHECK ALL FITTINGS AND RE-TIGHTEN AS
NECESSARY.
5. DO NOT USE THE BED UNLESS ALL BOLTS AND SCREWS ARE
FIRMLY SECURED.
6. NEED PARTS OR ASSISTANCE? EMAIL US AT Aufank@outlook.com
7. YOU CAN ASSEMBLE IT WITH OUR PACKAGING TOOLS OR WITH A.



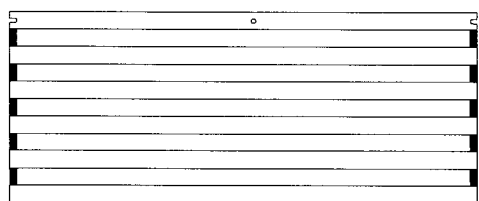
PART LIST



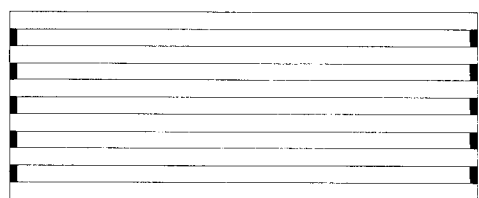
① x 1pc



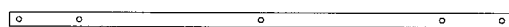
② x 1pc



③ x 1pc



④ x 1pc



⑤ x 1pc



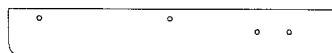
⑥ x 1pc



⑦ x 1pc



⑧ x 2pcs



⑨ x 1pc



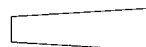
⑩ x 2pcs



⑪ x 3pcs



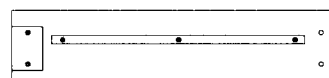
⑫ x 2pcs



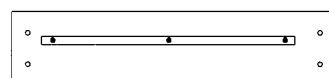
⑬ x 2pcs



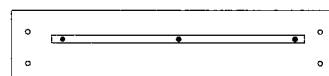
⑭ x 1pc



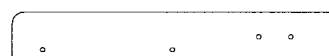
⑮ x 1pc



⑯ x 1pc

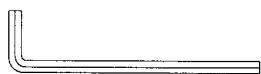


⑰ x 1pc



⑱ x 1pc

HARDWARE LIST



H1 M5 x 1pc



H2 M8x20mm x 8pcs



H3 M8x25mm x 14pcs



H4 M8x40mm x 9pcs



H5 M8x35mm x 4pcs



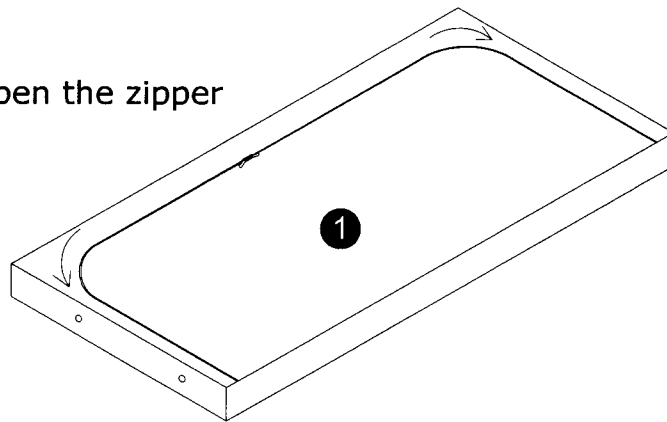
H6 M8 x 17mm x 20pcs



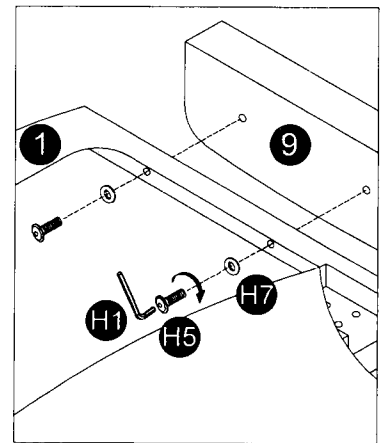
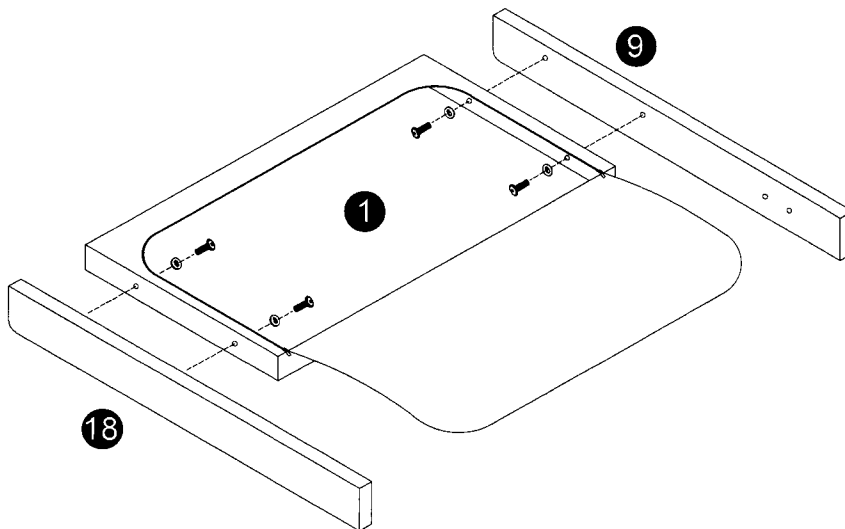
H7 M8 x 22mm x 8pcs

1 **NOTE:** PLEASE OPEN THE ZIPPER ON THE BACK OF **1** AND TAKE OUT THE PARTS.

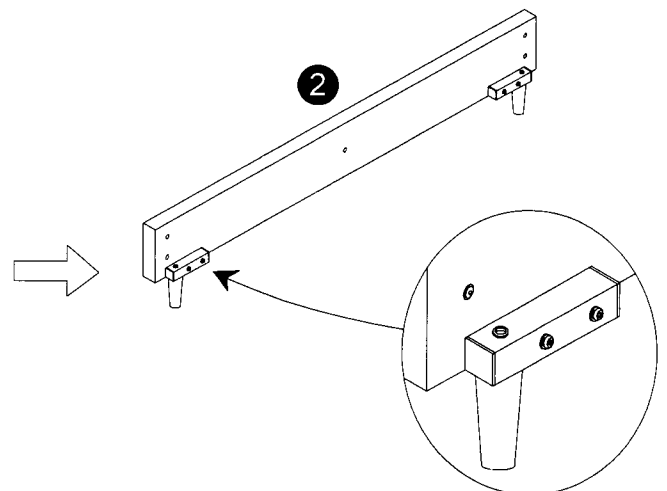
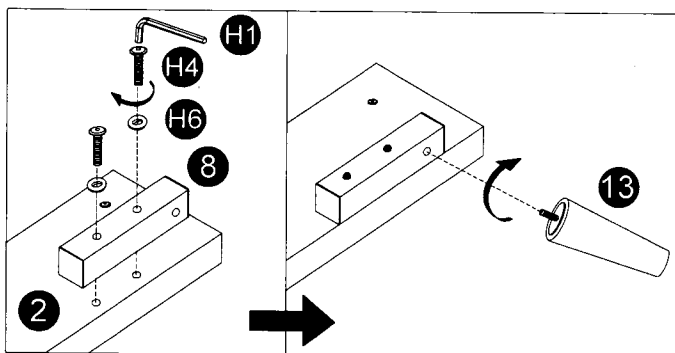
Open the zipper



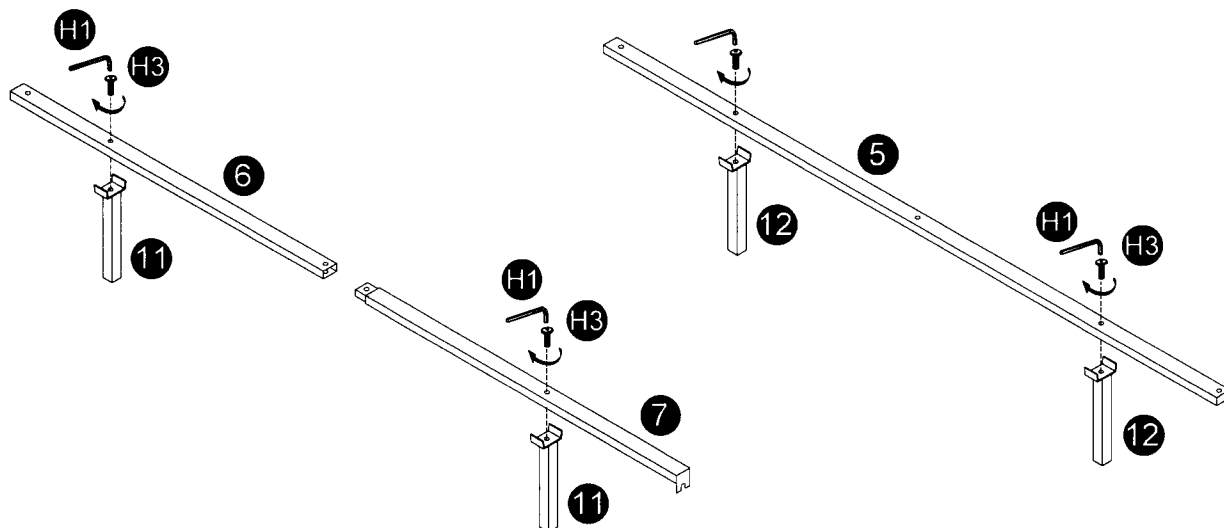
2



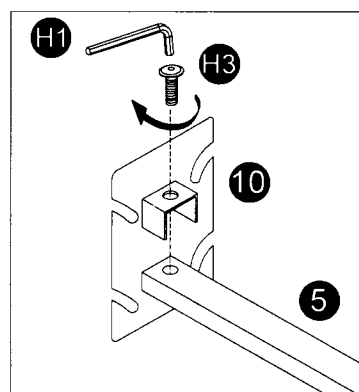
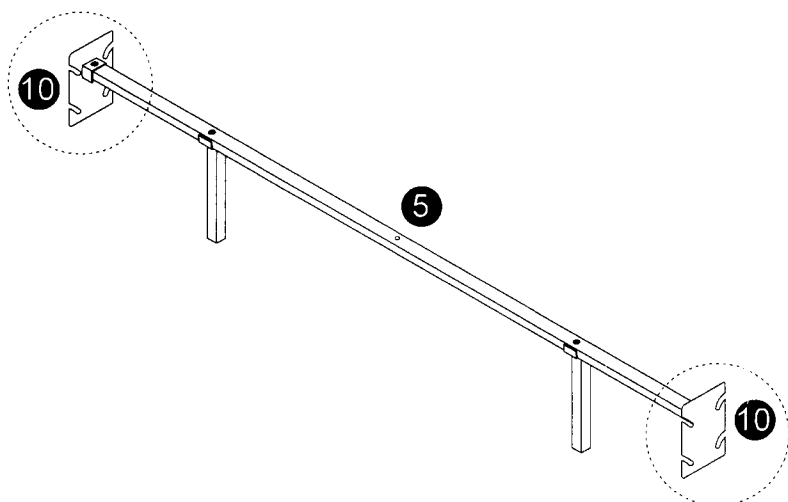
3



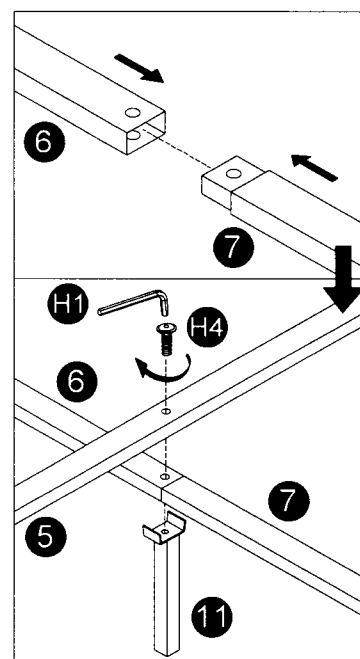
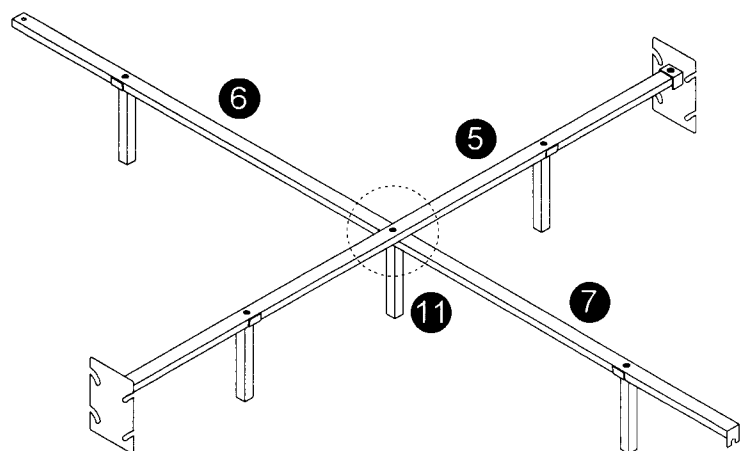
4



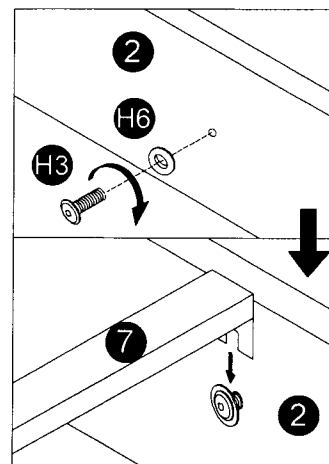
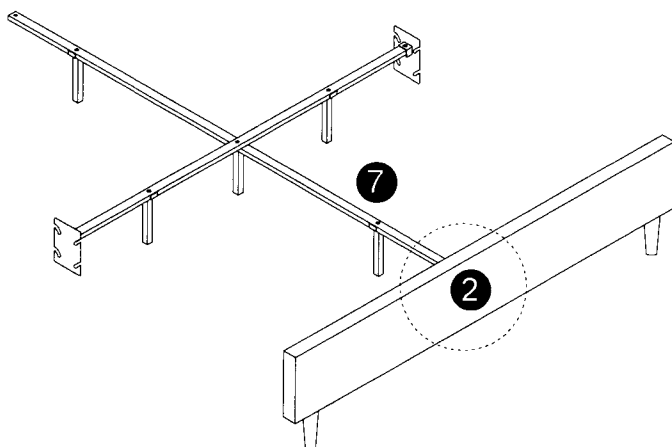
5



6

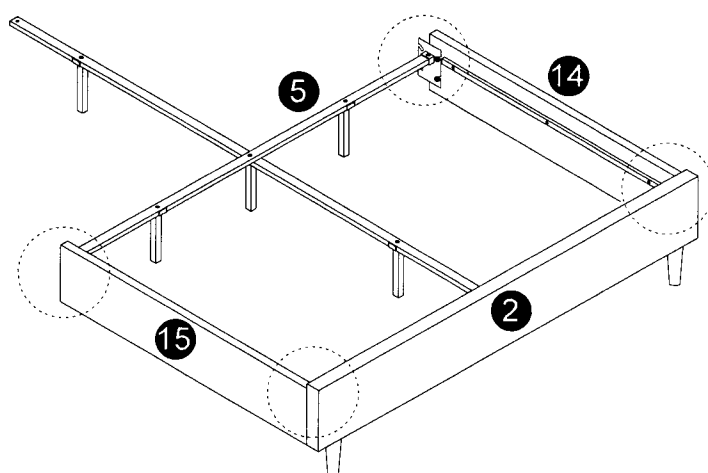
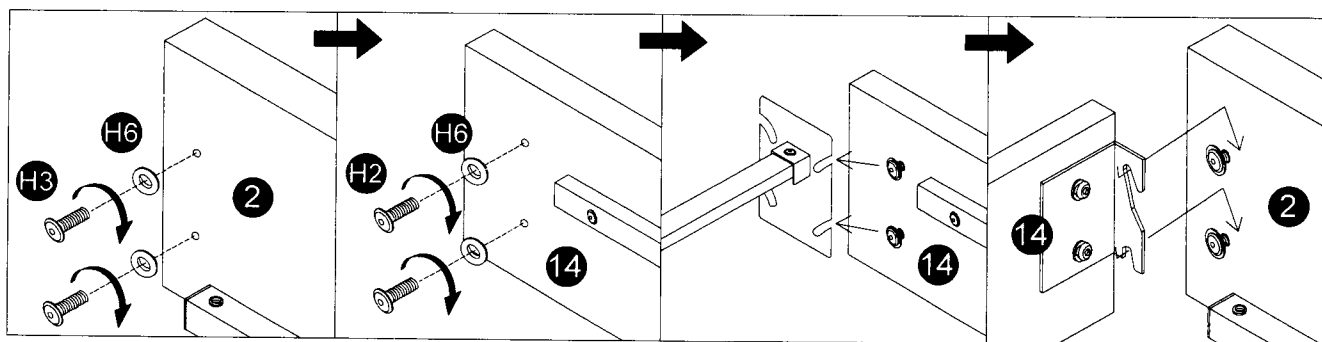


7



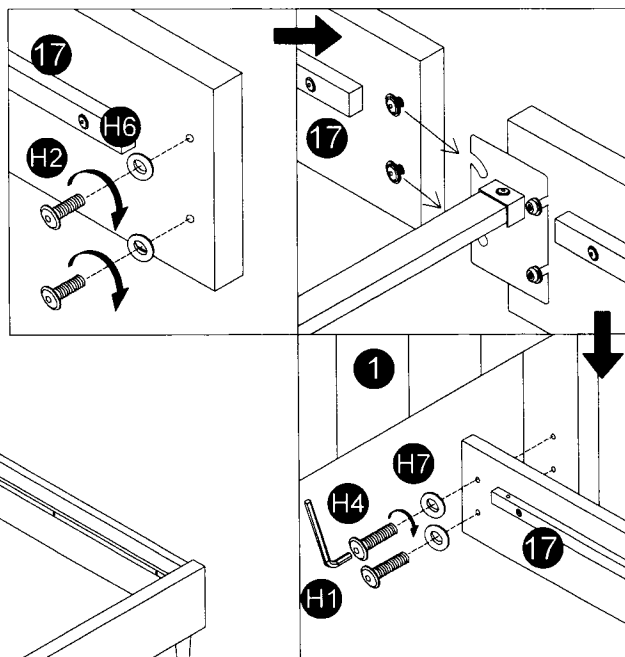
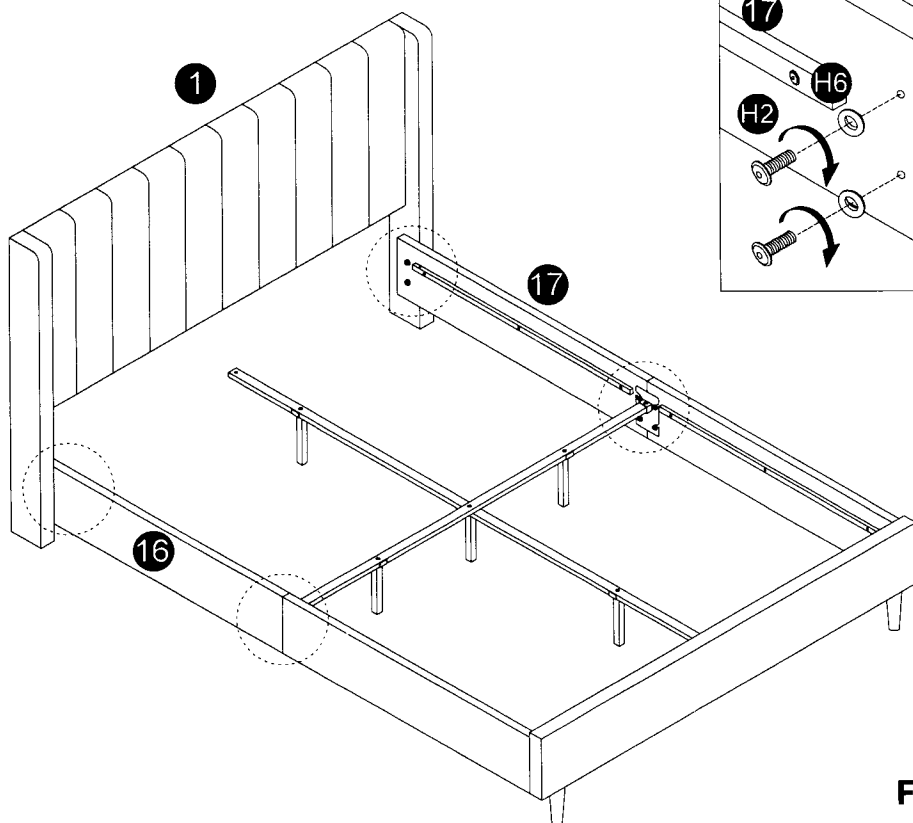
Do not fully tighten fixings!

8



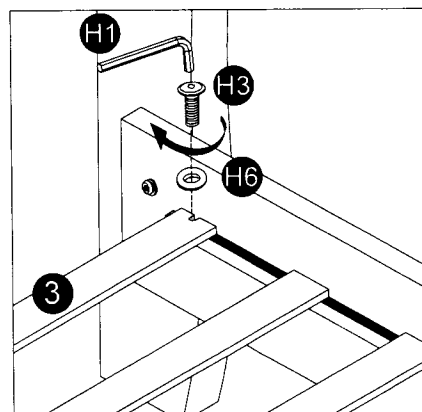
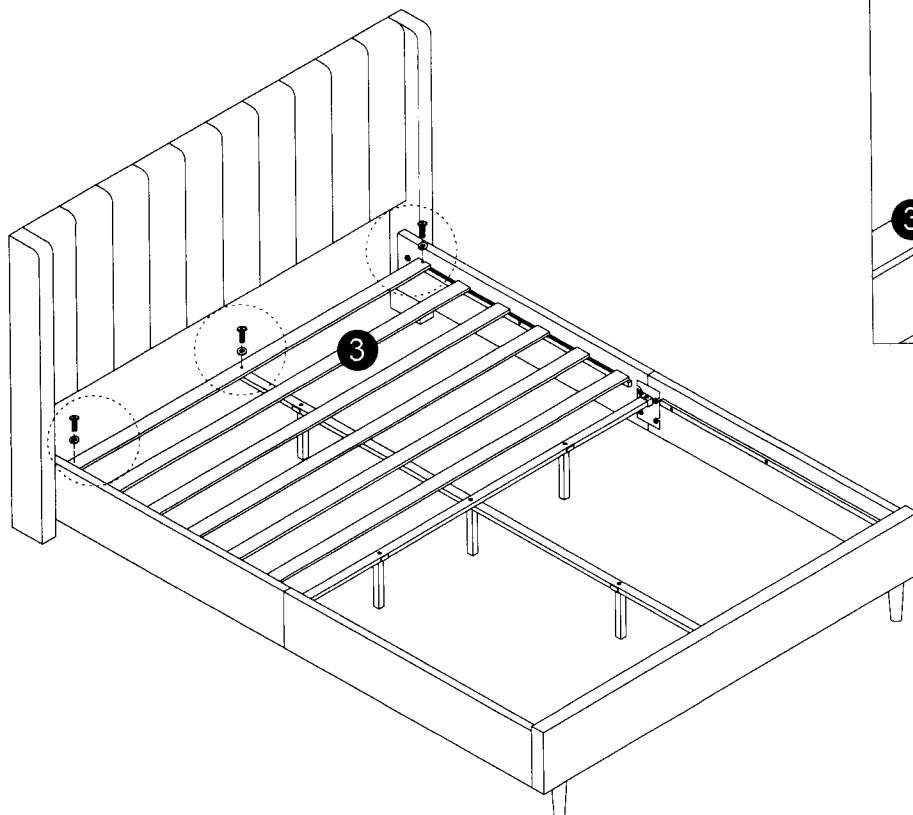
Do not fully tighten fixings!

9

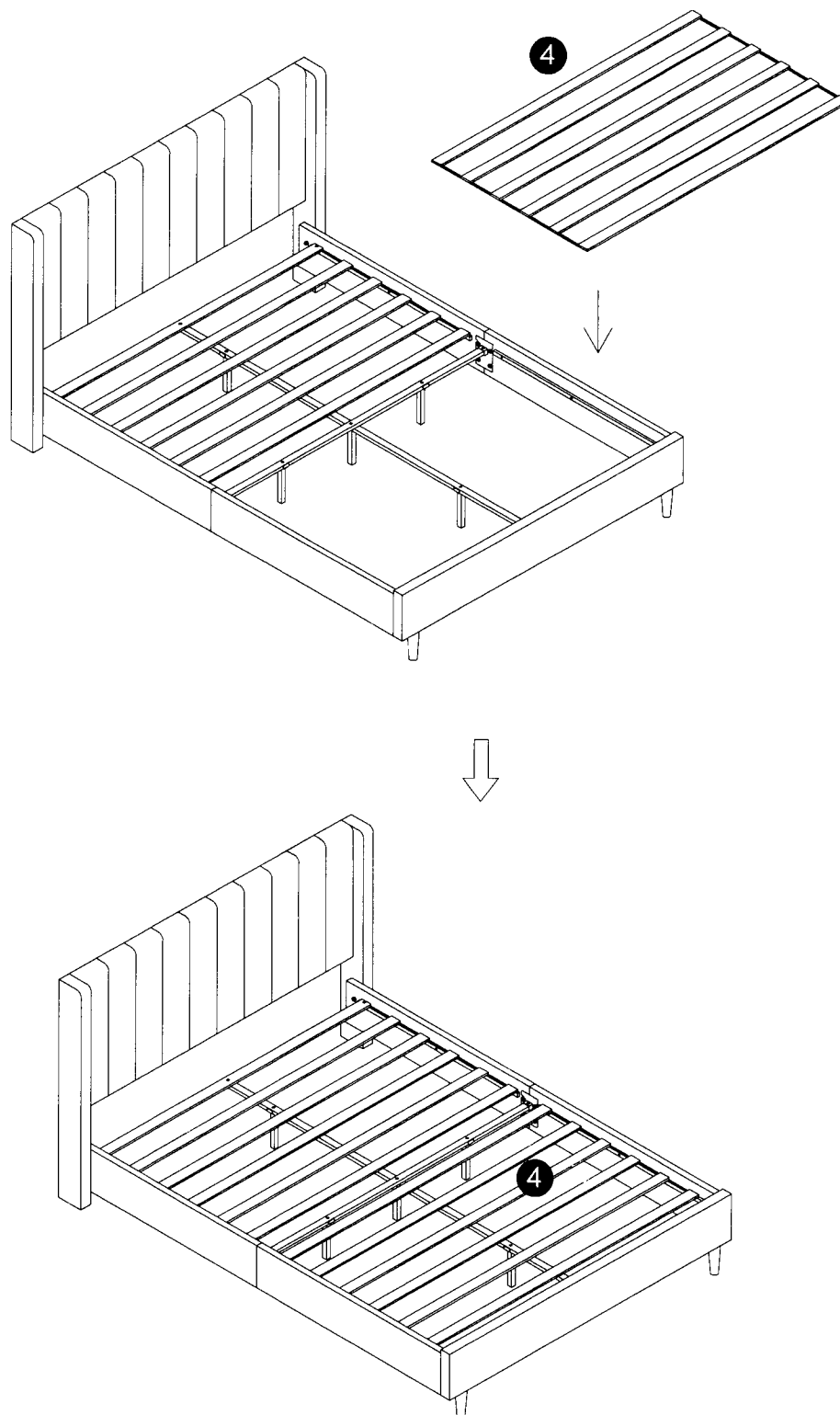


Fully tighten all fixings.

10



11



Job Complete !

In the interest of our environment please dispose of all packaging thoughtfully.