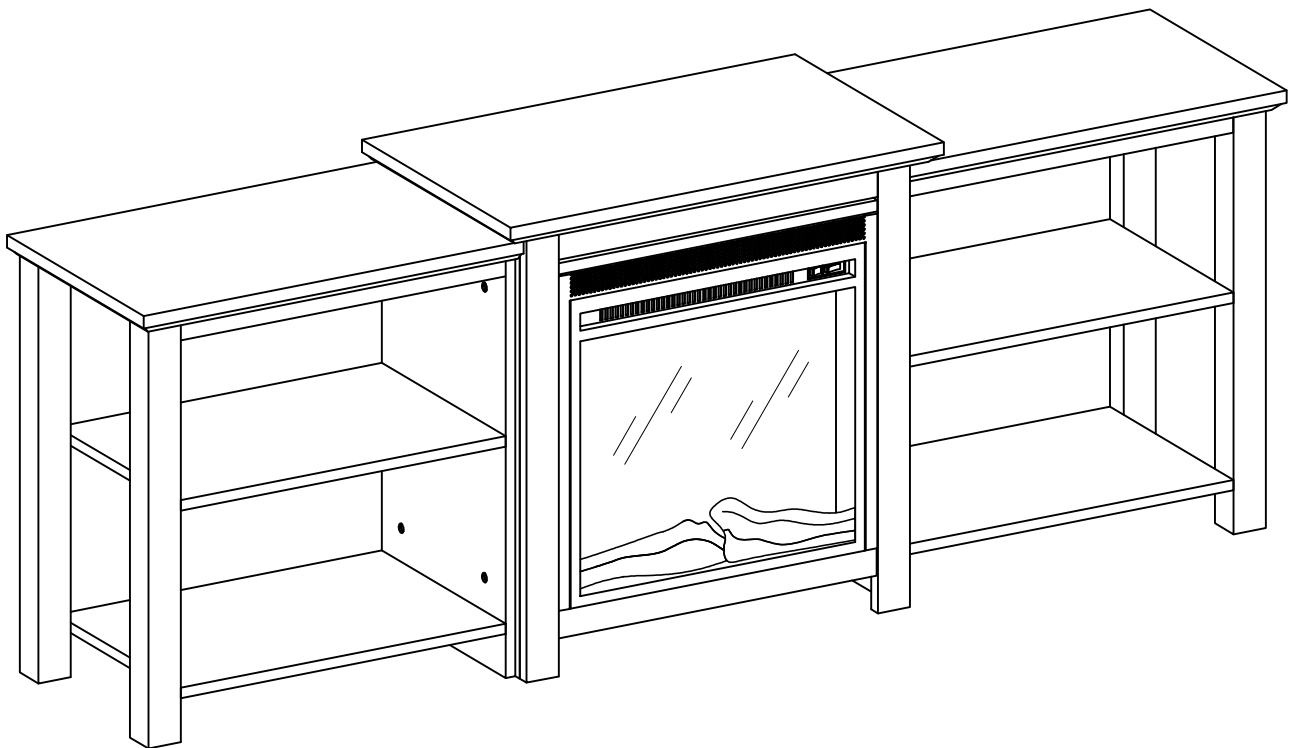


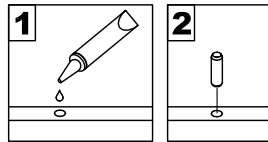
Assembly Instructions



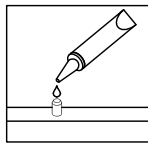
Please visit our website for the most current instructions, assembly tips, report damage, or request parts.

General Assembly Guidelines

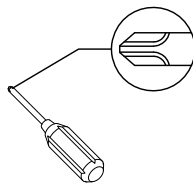
- I. Ensure that all parts and hardware are available before beginning assembly.
- II. Follow each step carefully to ensure the proper assembly of this product.
- III. Two people are recommended for ease in the assembly of this product.
- IV. The three main types of hardware used to assemble this product are: wood dowels, screws and bolts.
- V. The provided glue is to secure wood dowels in place. When first inserting dowels, locate the appropriate hole for the dowel, place a small amount of glue in the hole and insert the dowel. Wipe away excess glue immediately.



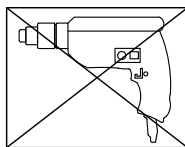
In future assembly steps when dowels are necessary to attach assembly parts together, place a small amount of glue on the end of the dowel before attaching parts together. Wipe away excess glue immediately.



- VI. A Phillips head screwdriver is required for the assembly of this product .

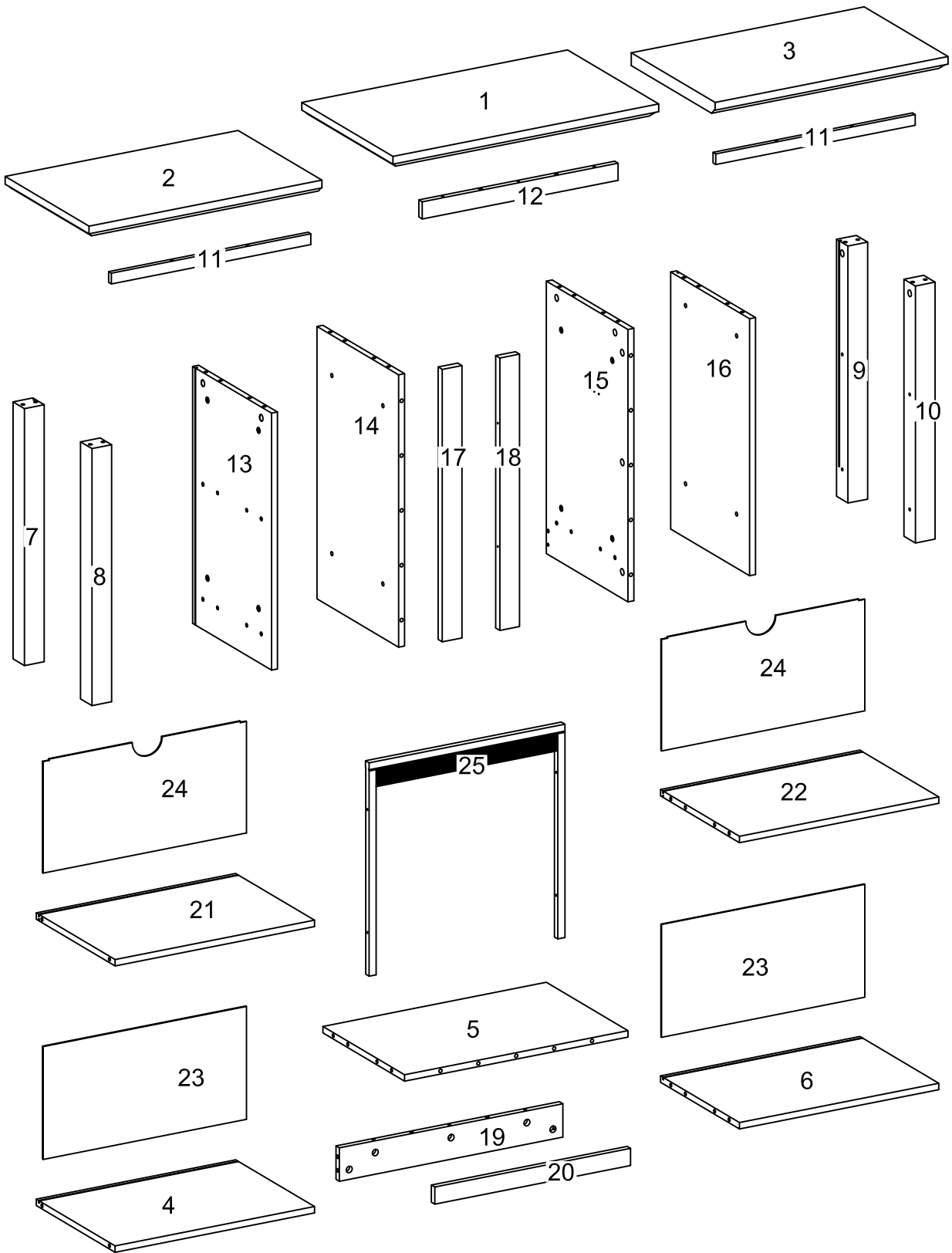


- VII. Power tools should not be used to assemble this product.




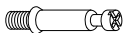

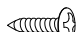

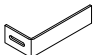
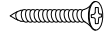
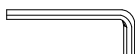


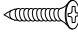
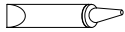



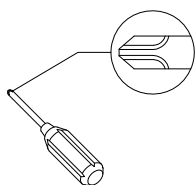
- VIII. Drill may be needed for securing product to wall.

Parts List



Hardware List

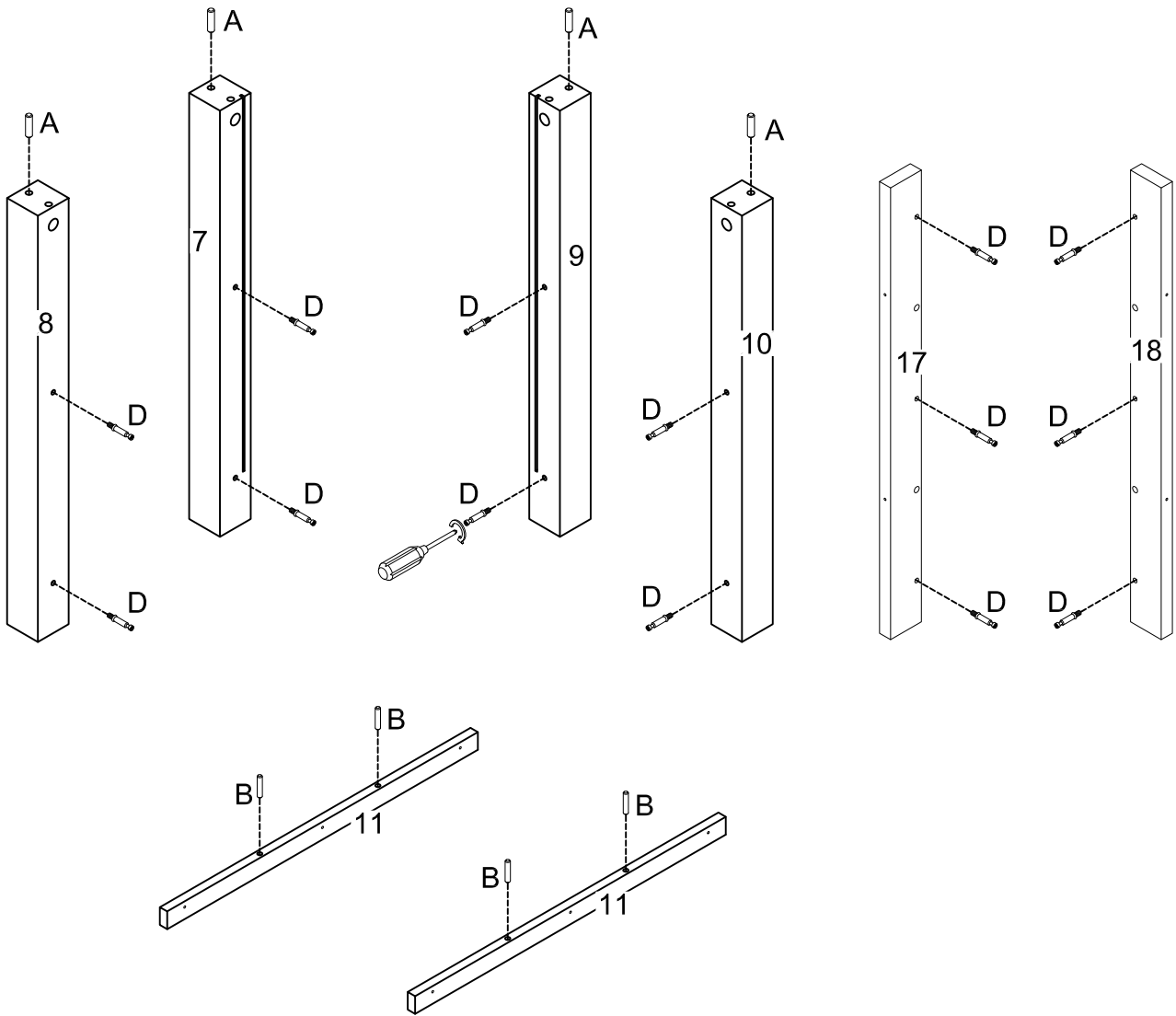
A		Ø8x30mm	Wooden dowel	36 pcs
B		Ø6x30mm		4 pcs
C		Ø15x11mm	Cam lock	46 pcs
D		Ø6x32mm	Cam bolt	46 pcs
E			Sticker	54 pcs
F		Ø4x12mm	Screw	16 pcs
G			L shape bracket	6 pcs
H			L shape bracket	2 pcs
J		Ø4x38mm	Screw	7 pcs
K		M4	Hex Key	1 pc
L		M6x25mm	Bolt	8 pcs
M			Plastic wedge	16 pcs
N		Ø3x17	Screw	16 pcs
P			Glue tube	1 pc
Q		F18V66L	Fireplace Insert	1 pc



Philips head screwdriver required for assembly
(not included)

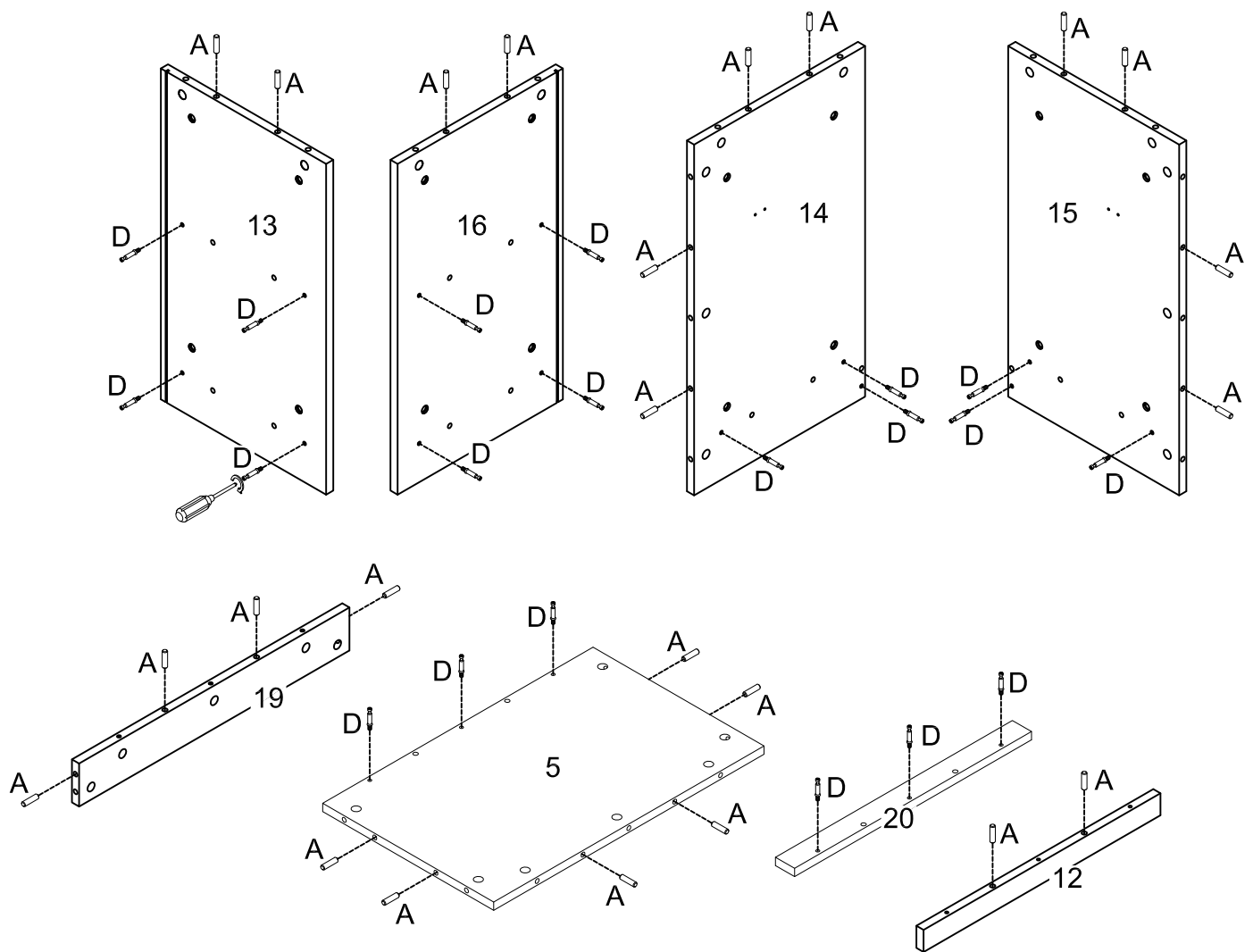
*The hardware quantities listed above are required for proper assembly.
Some extra hardware may also have been included.*

Step 1



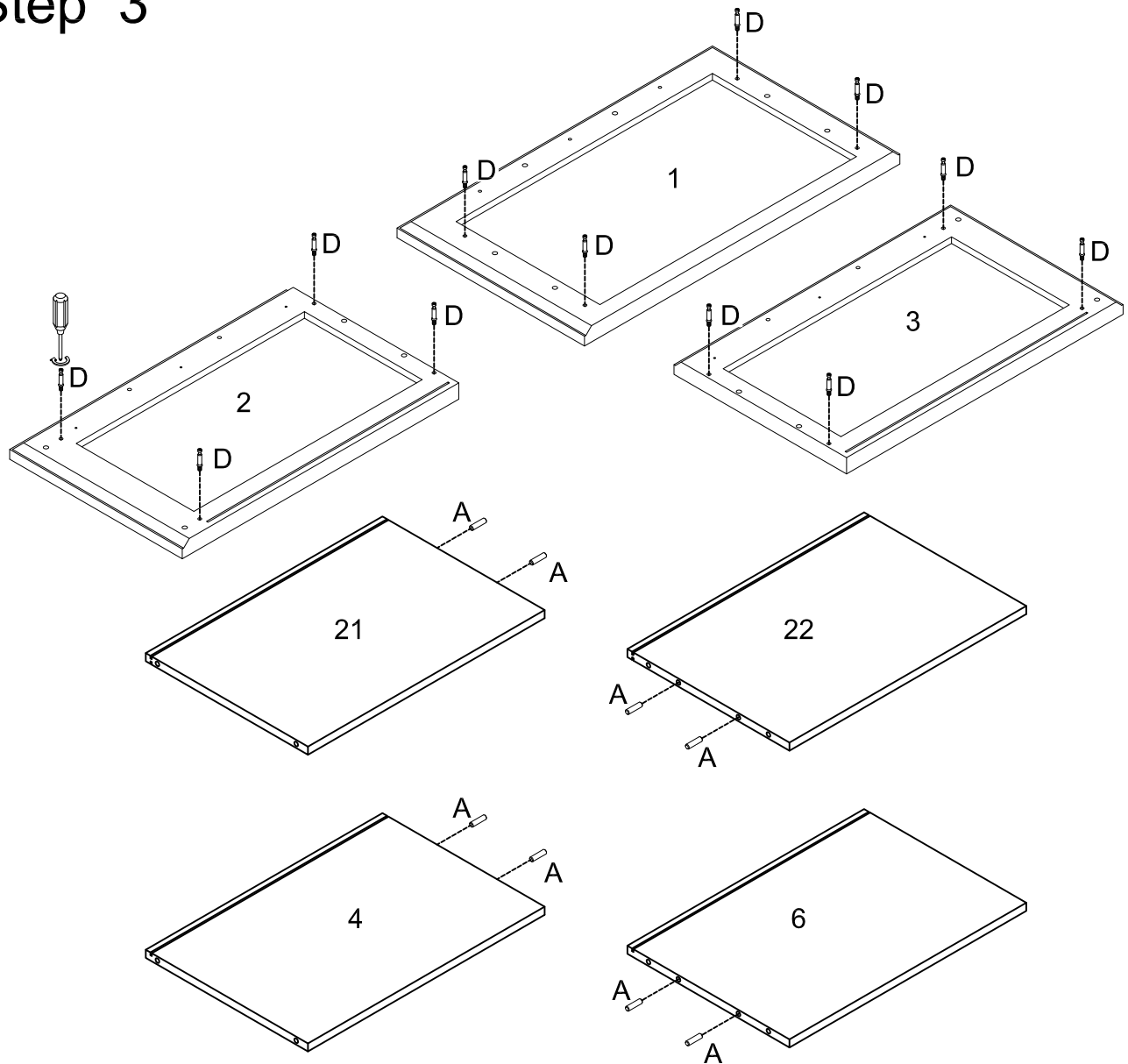
Insert wooden dowel (A) into parts (7,8,9,10) ,insert wooden dowel (B) into part (11), using cam bolt (D) secure parts (7,8,9,10,17,18) with Philips head screwdriver as per diagram.

Step 2



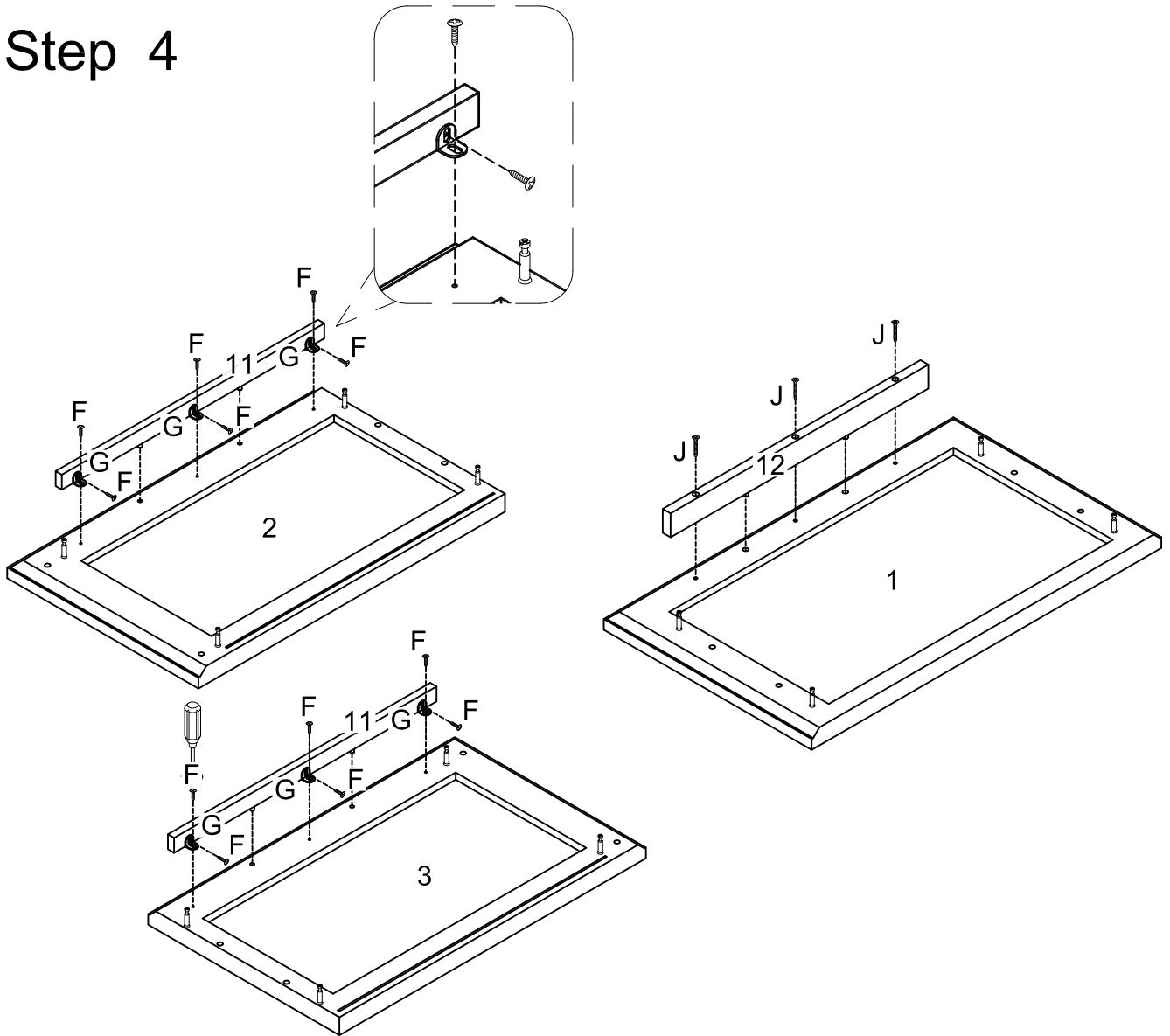
Insert wooden dowel (A) into parts (5,12,13,14,15,16,19) ,using cam bolt (D) secure parts (5,13,14,15,16,20) with Philips head screwdriver as per diagram.

Step 3



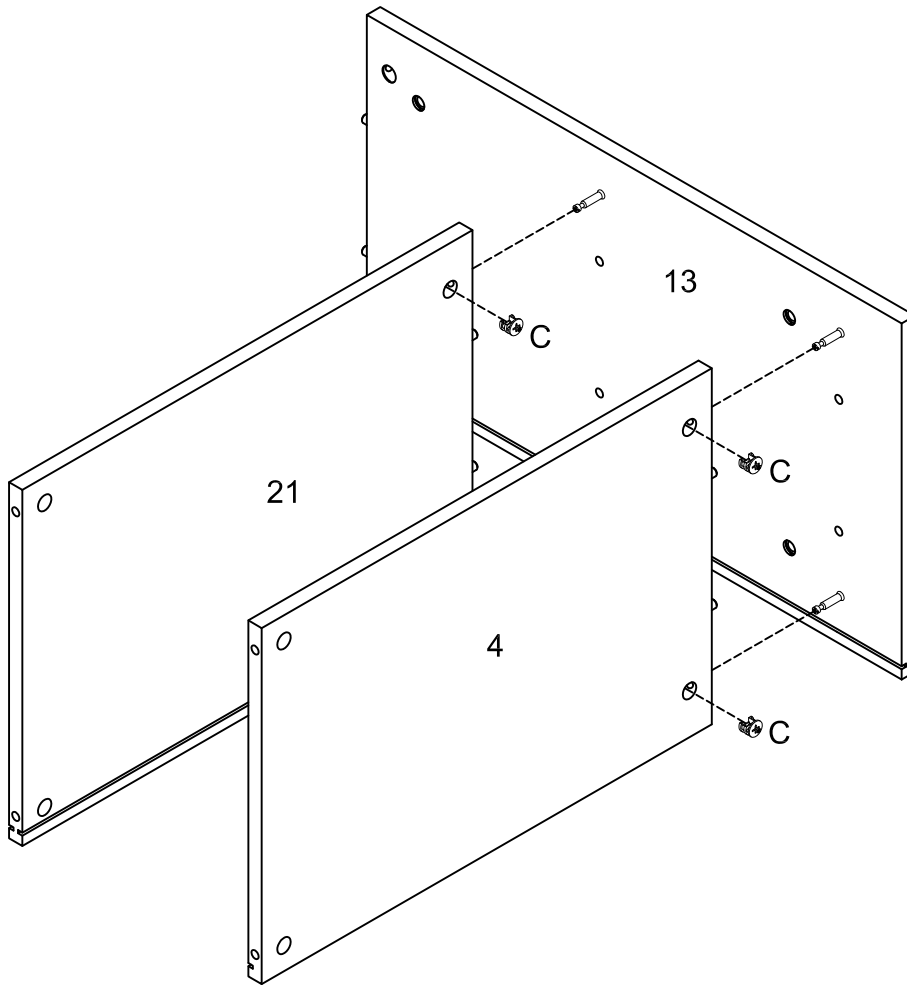
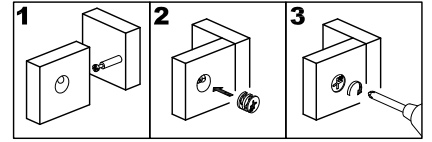
Insert wooden dowel (A) into parts (4,6,21,22) ,using cam bolt (D) secure parts (1,2,3) with Phillips head screwdriver as per diagram.

Step 4



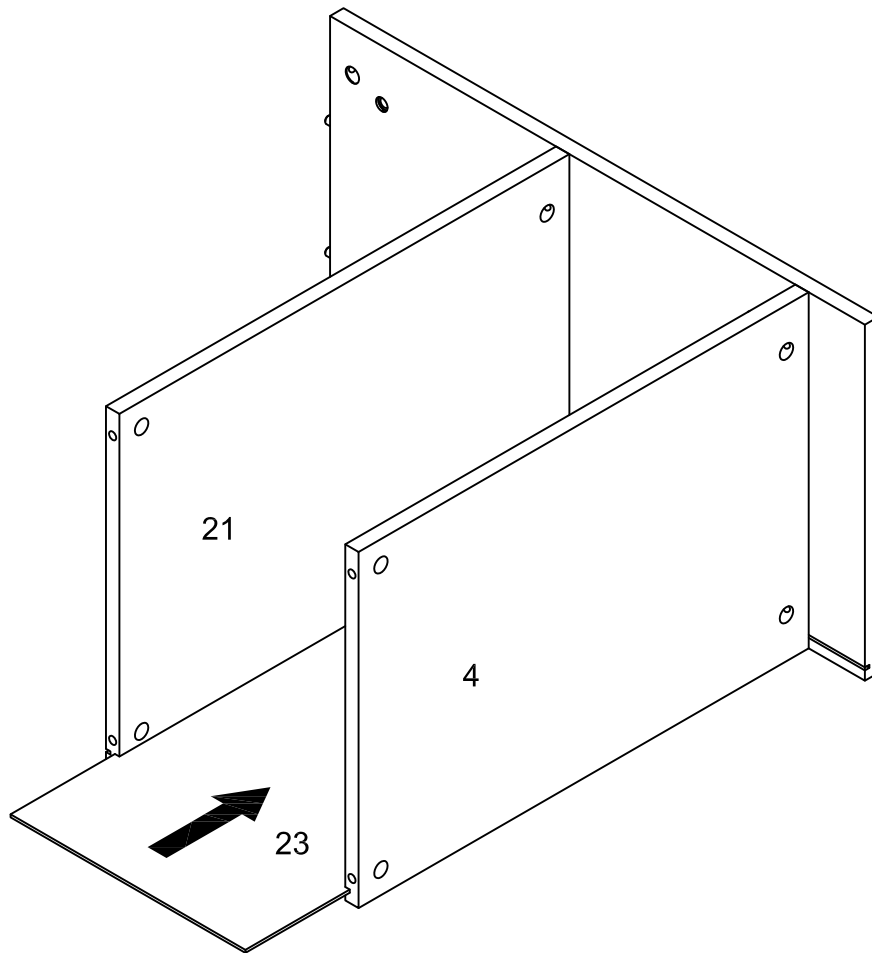
Using screw (F) secure L shape (G) into parts (11) to parts (2,3) ,then using screw (J) secure part (12) to part (1) with Phillips head screwdriver as per diagram.

Step 5



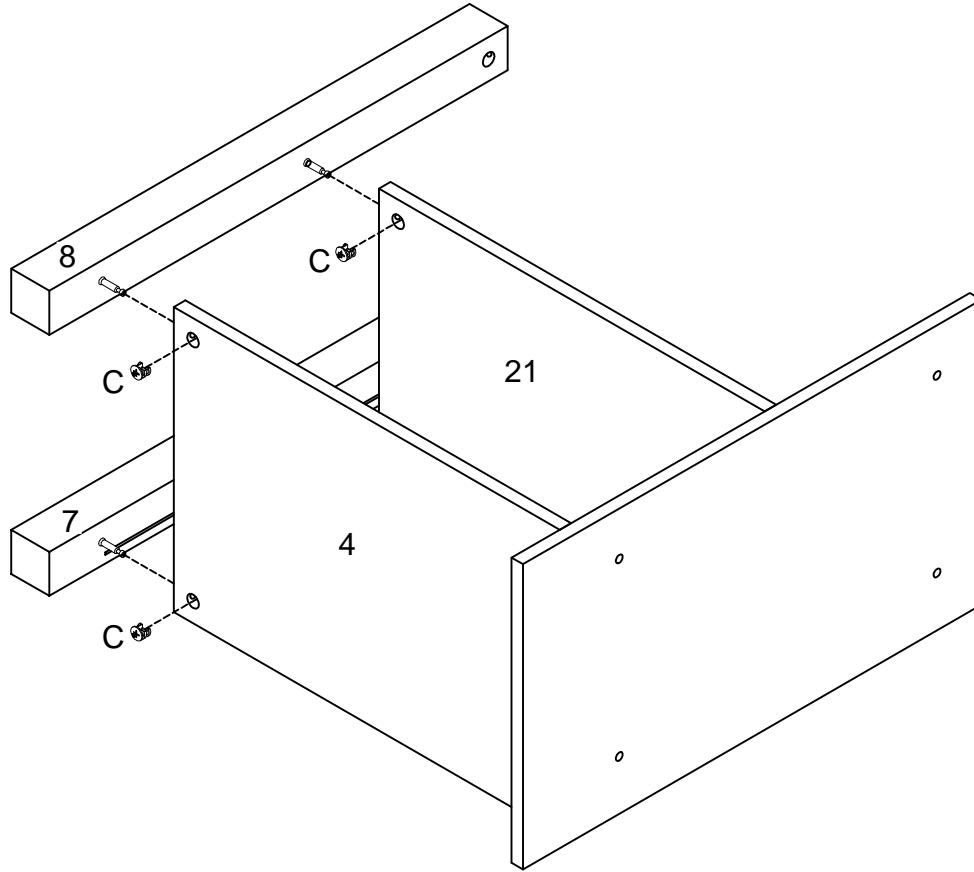
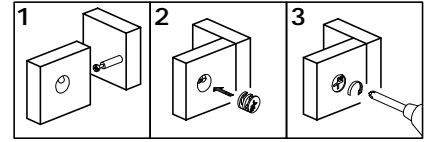
Using cam lock (C) secure parts(4,21) into part (13) with Phillips head screwdriver as per diagram.

Step 6



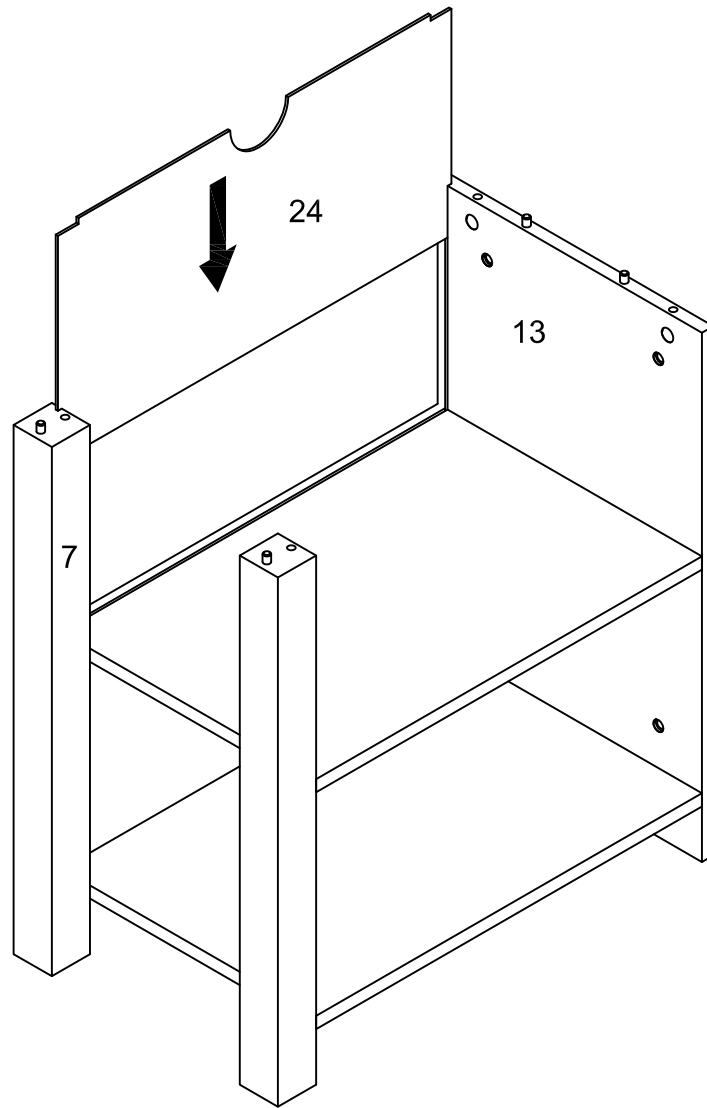
Put part (23) into parts (4,21) as per diagram.

Step 7



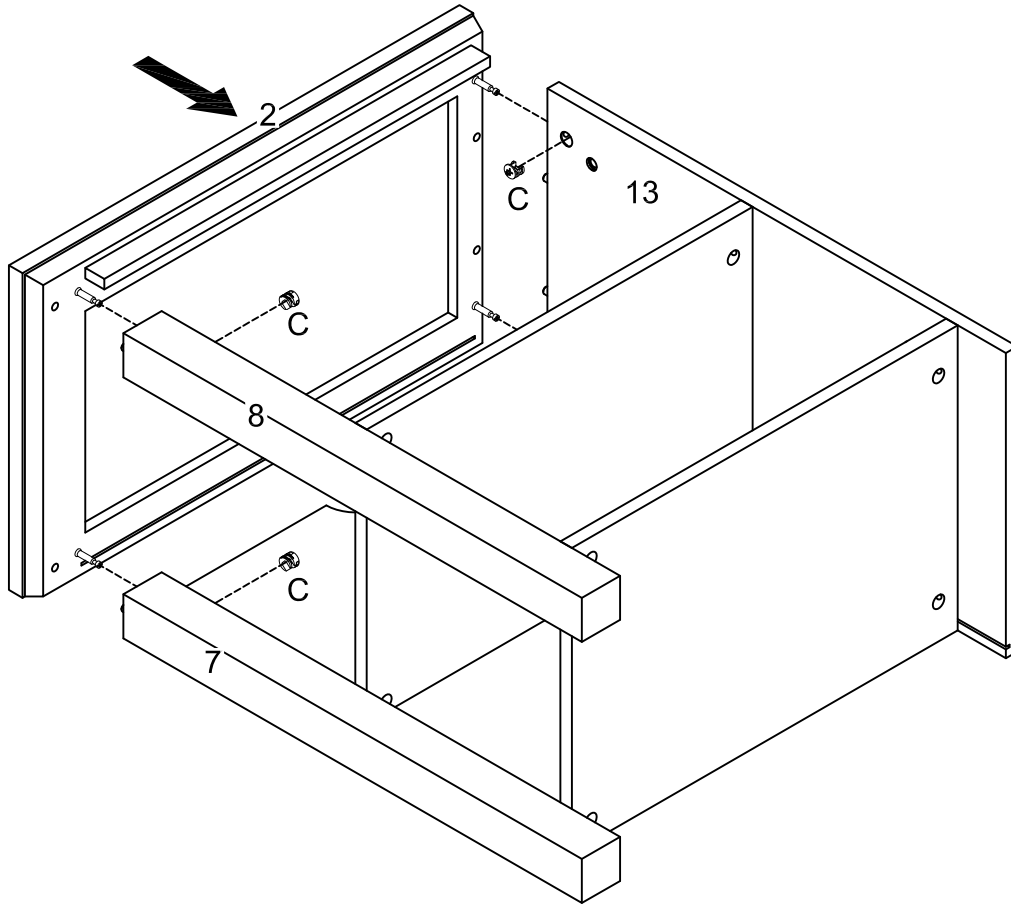
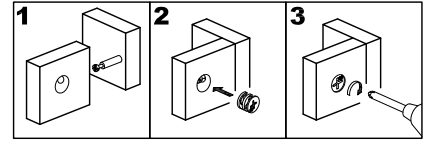
Using cam lock (C) secure parts(7,8) into parts (4,21)with Phillips head screwdriver as per diagram.

Step 8



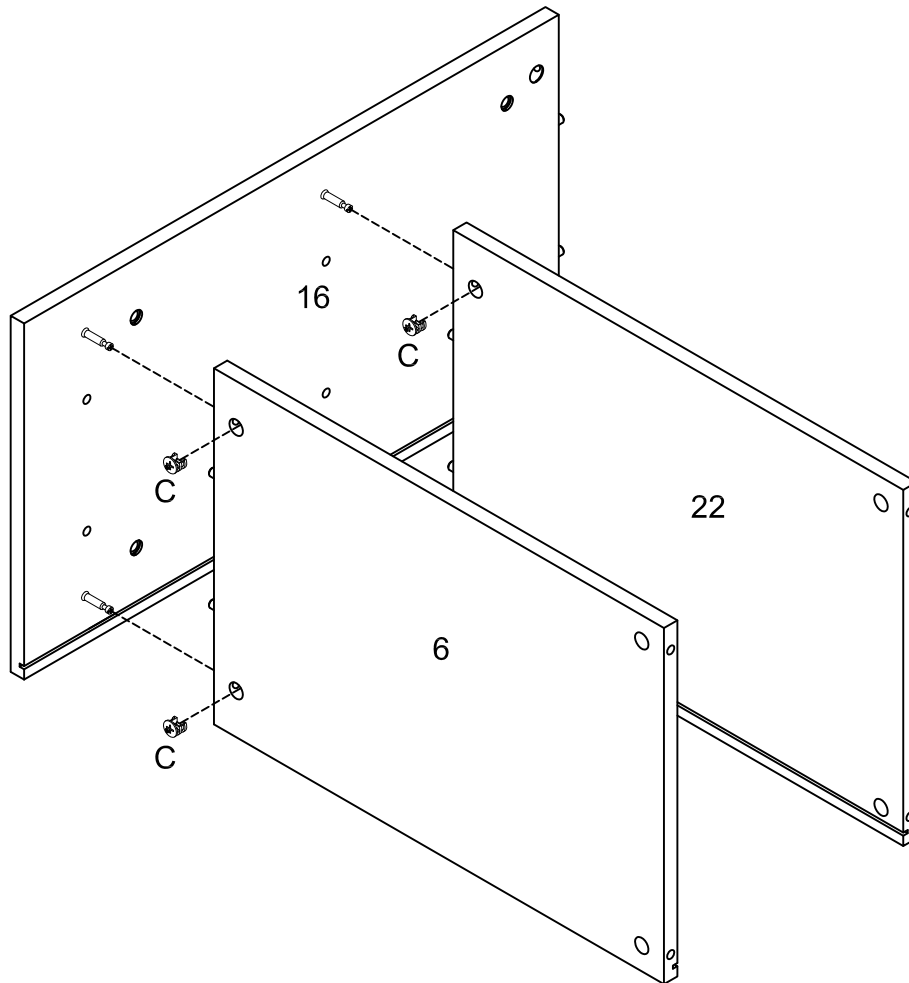
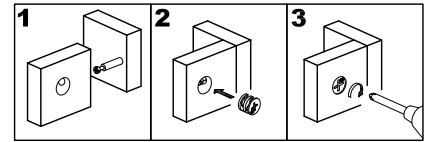
Put part (24) into parts (7,13) as per diagram.

Step 9



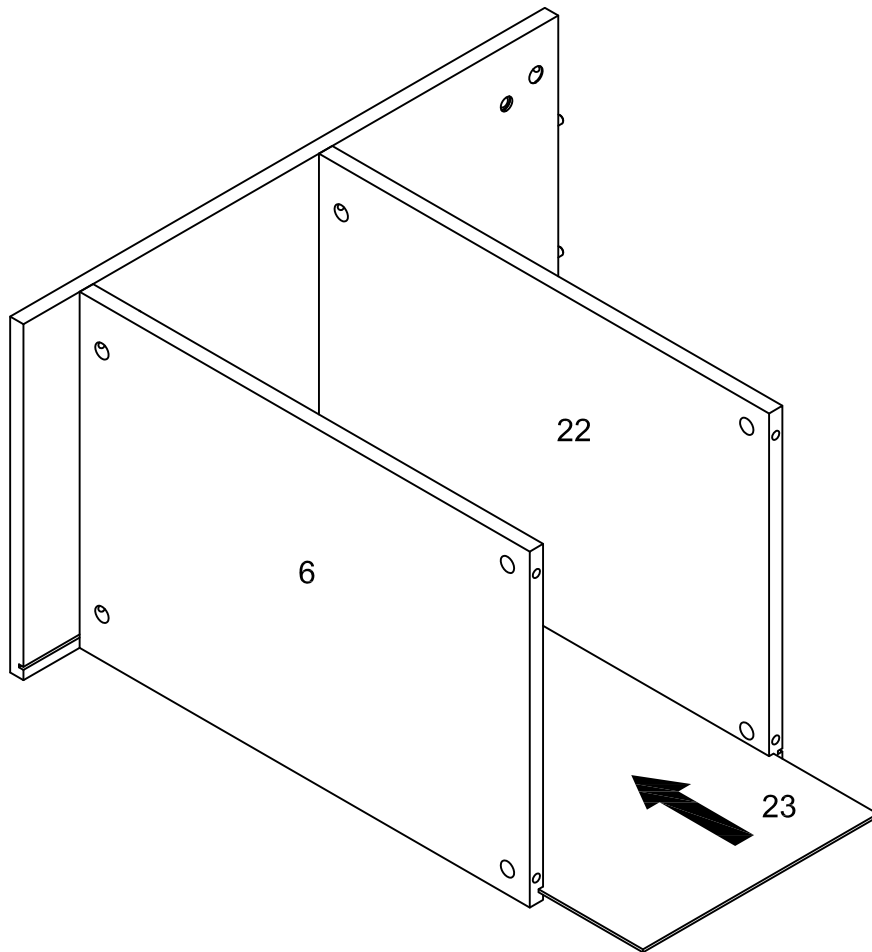
Using cam lock (C) secure part (2) into parts (7,8,13)with Phillips head screwdriver as per diagram.

Step 10



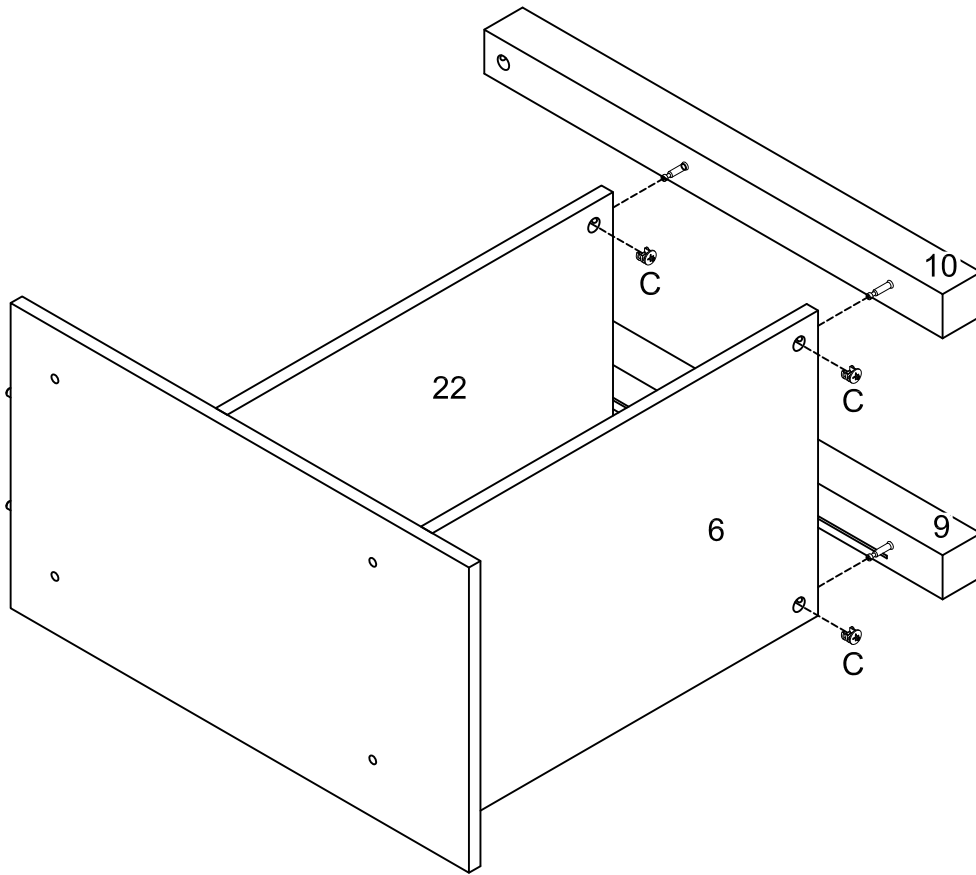
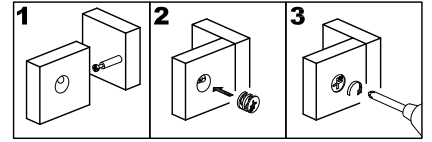
Using cam lock (C) secure parts(6,22) into part (16) with Phillips head screwdriver as per diagram.

Step 11



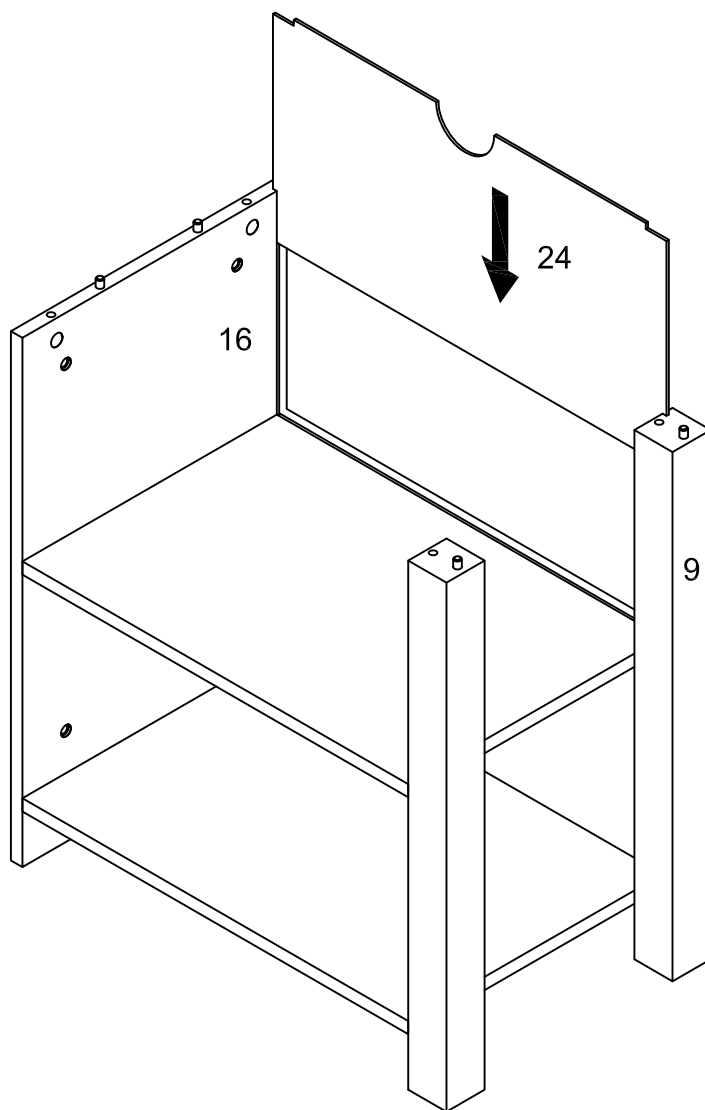
Insert part (23) into parts (6,22) as per diagram.

Step 12



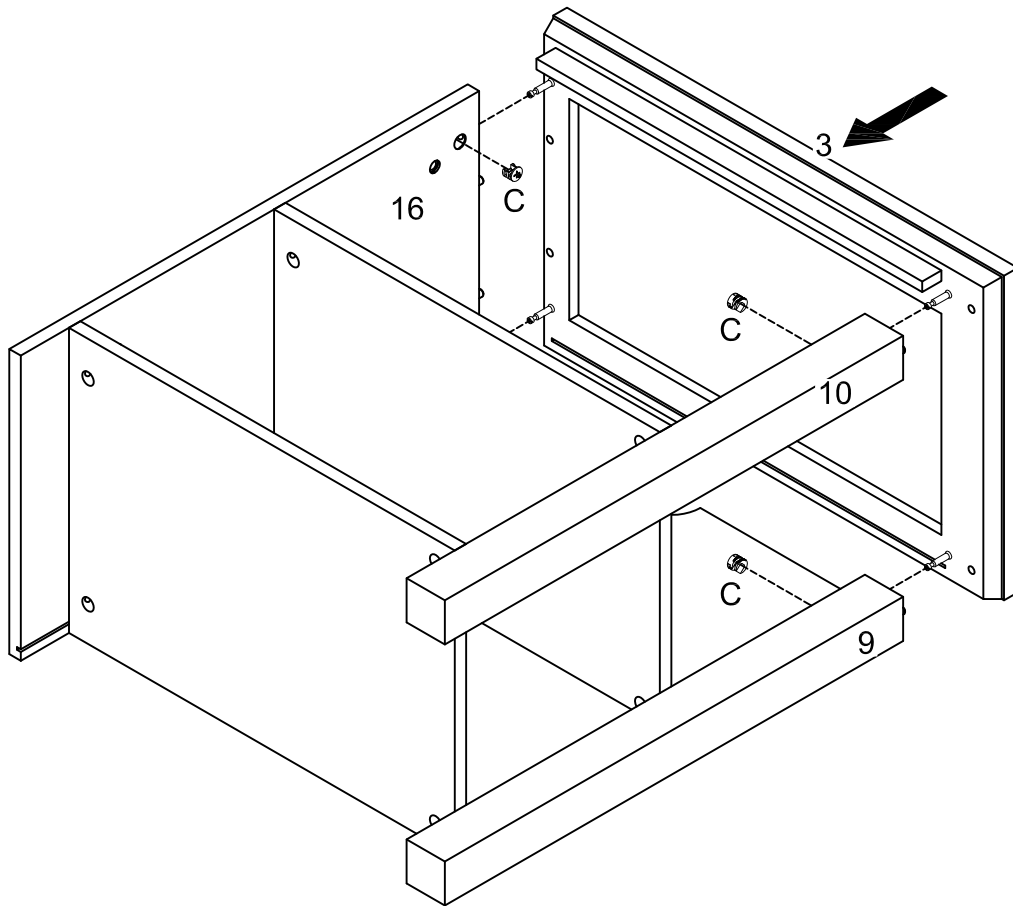
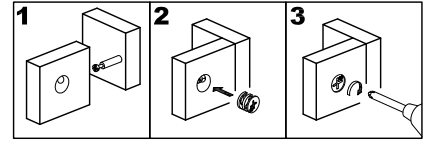
Using cam lock (C) secure parts(9,10) into parts (6,22)with Phillips head screwdriver as per diagram.

Step 13



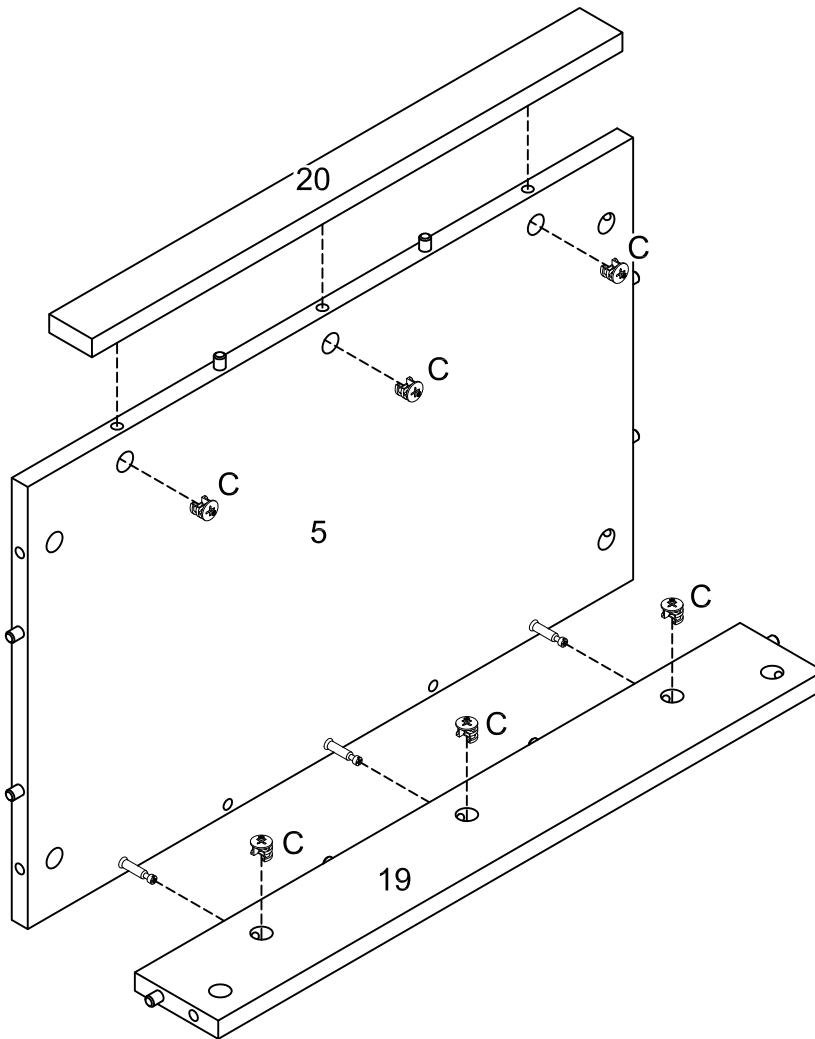
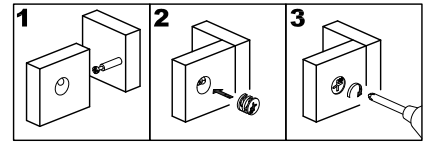
Insert part (24) to parts (9,16) as per diagram.

Step 14



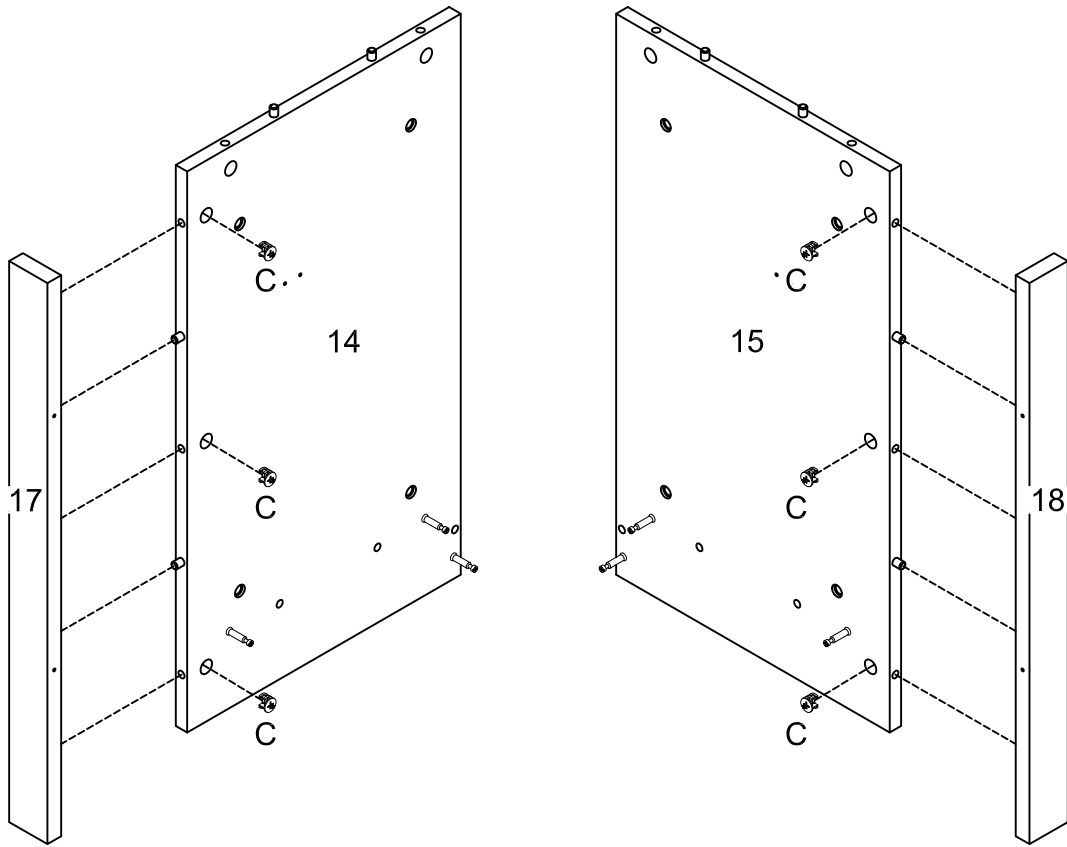
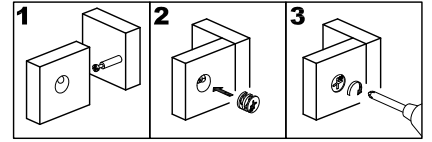
Using cam lock (C) secure part (3) into parts (9,10,16)with Phillips head screwdriver as per diagram.

Step 15



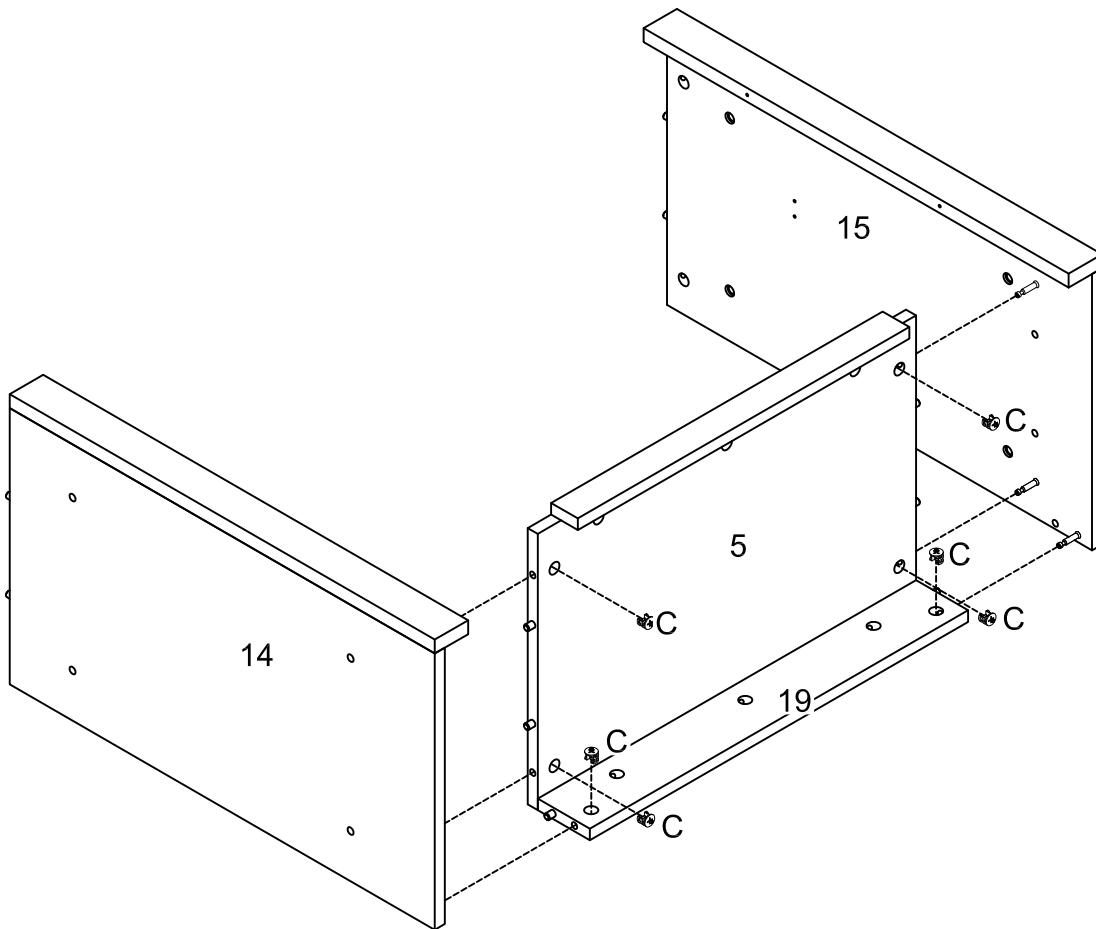
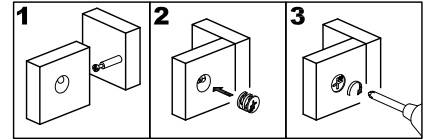
Using cam lock (C) secure part (5) into parts (19,20)with Phillips head screwdriver as per diagram.

Step 16



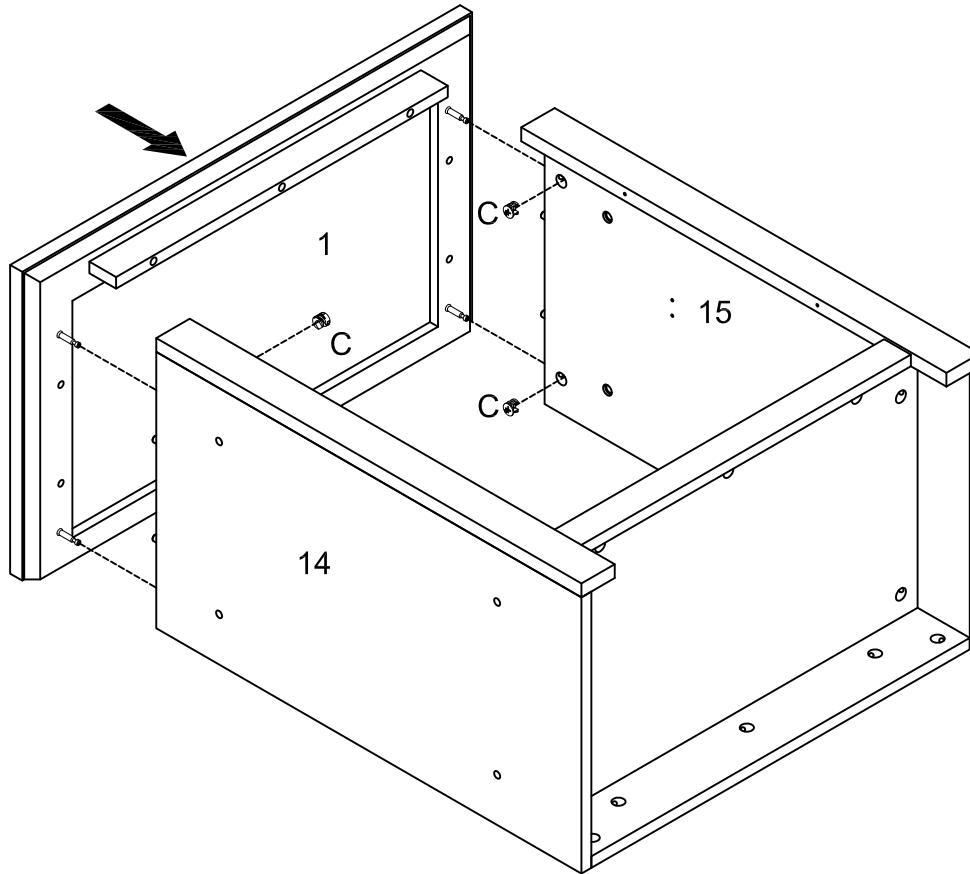
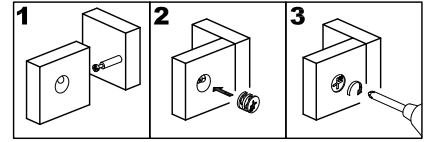
Using cam lock (C) secure parts(17,18) into parts (14,15)with Phillips head screwdriver as per diagram.

Step 17



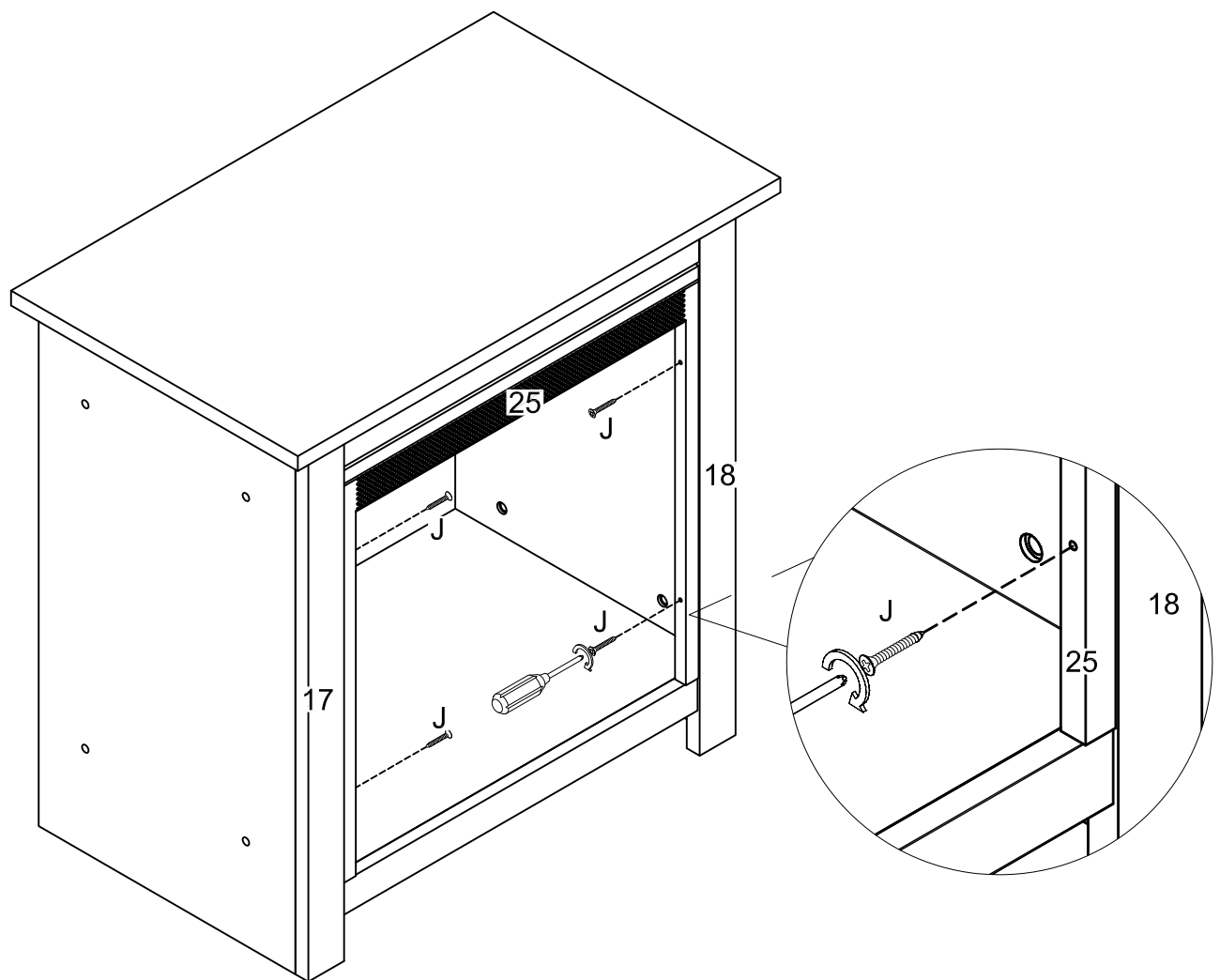
Using cam lock (C) secure parts(14, 15) into parts (5,19)with Phillips head screwdriver as per diagram.

Step 18



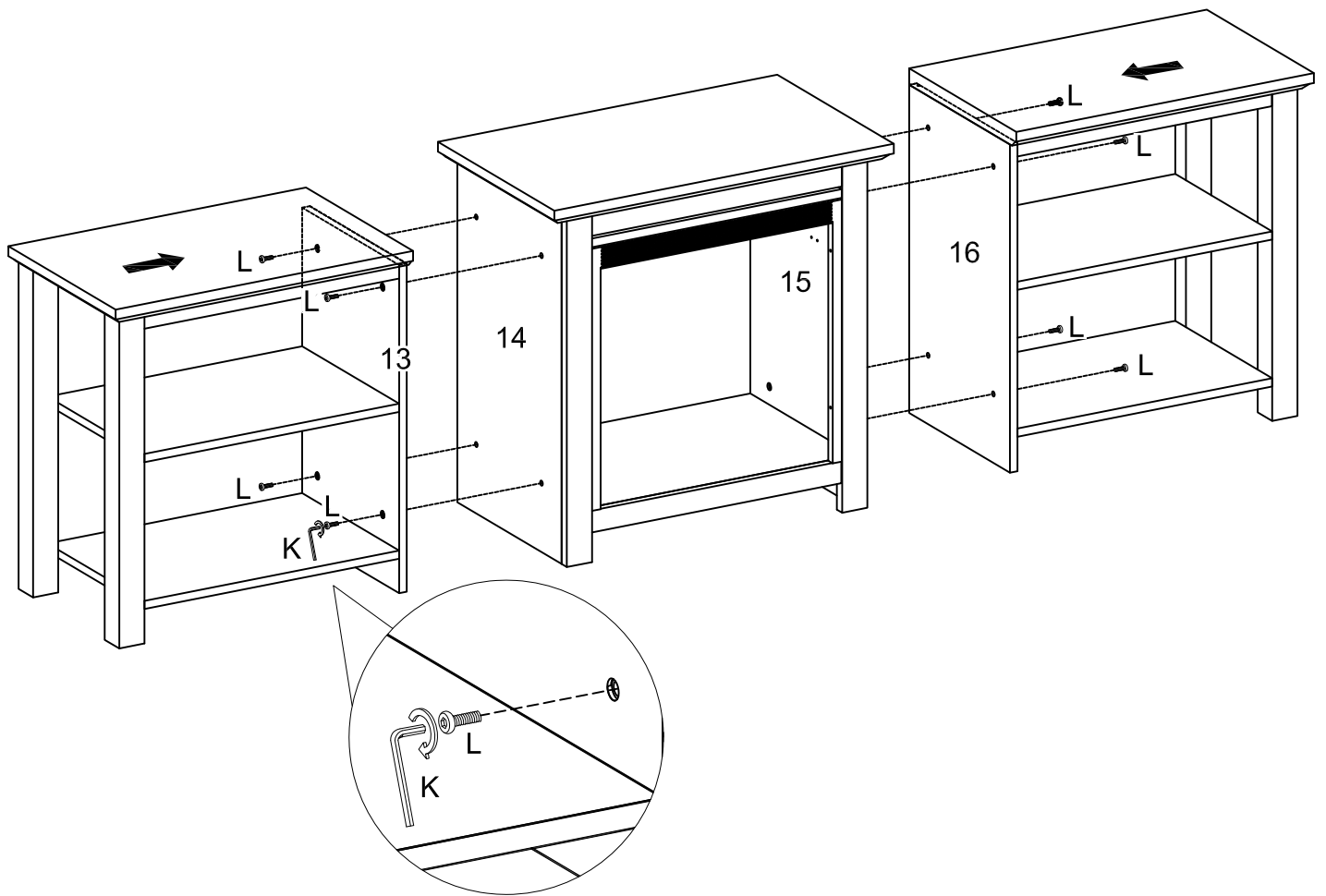
Using cam lock (C) secure part (1) into parts (14,15)with Phillips head screwdriver as per diagram.

Step 19



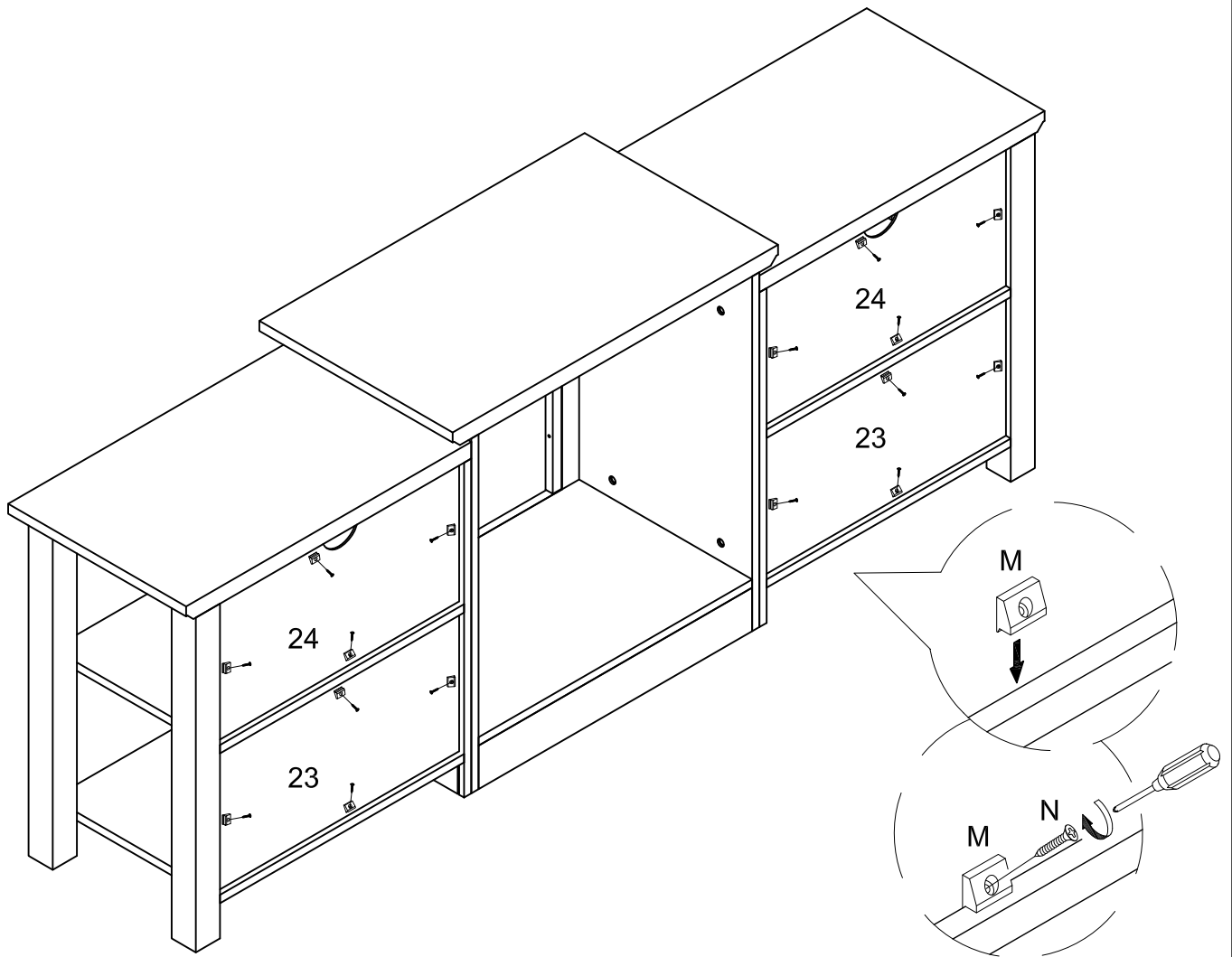
Using screw (J) secure parts (18,25) with Philips head screwdriver as per diagram.

Step 20



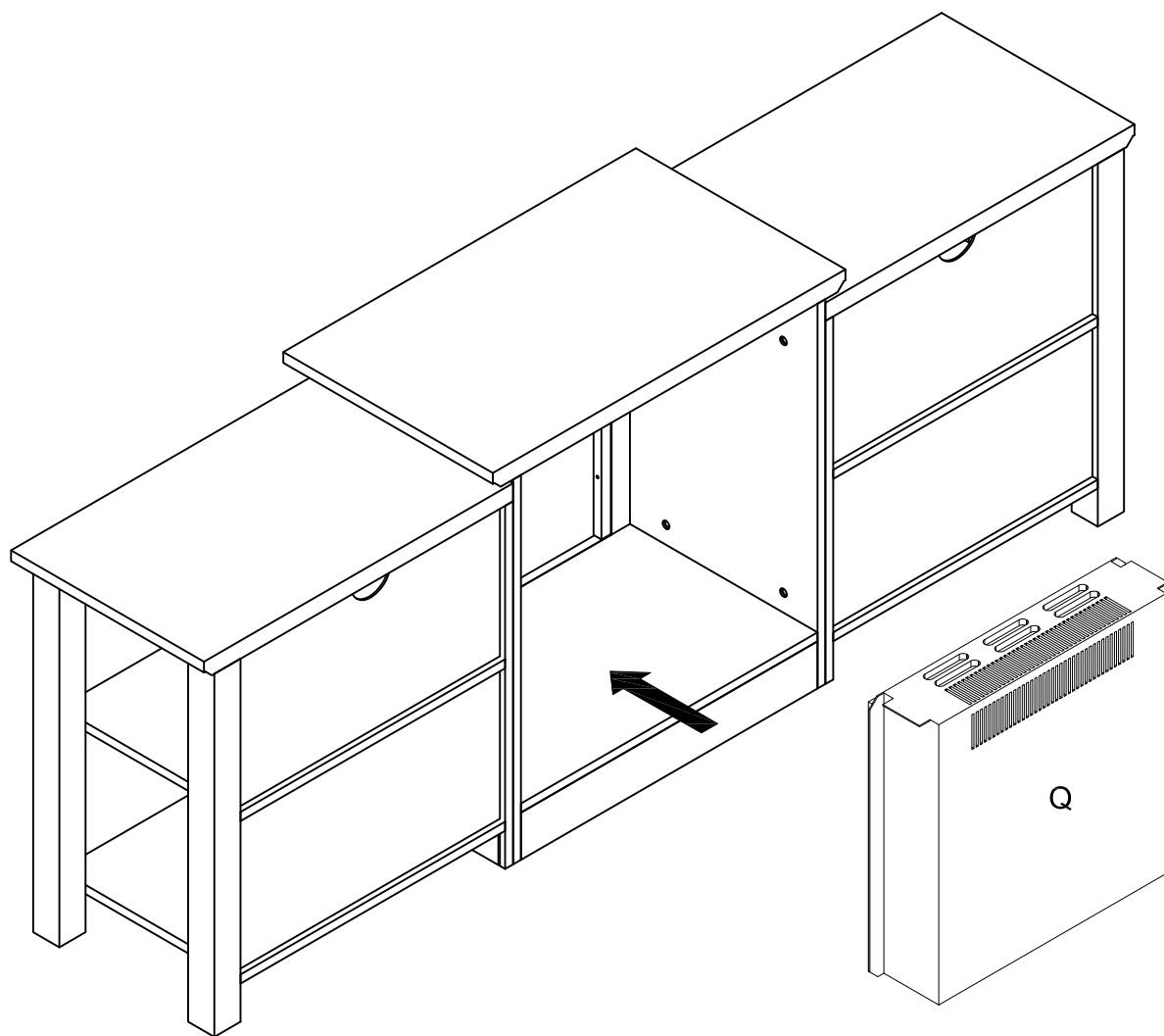
Using bolt (L) secure parts (13,14,15,16) with hex key (K) as per diagram.

Step 21



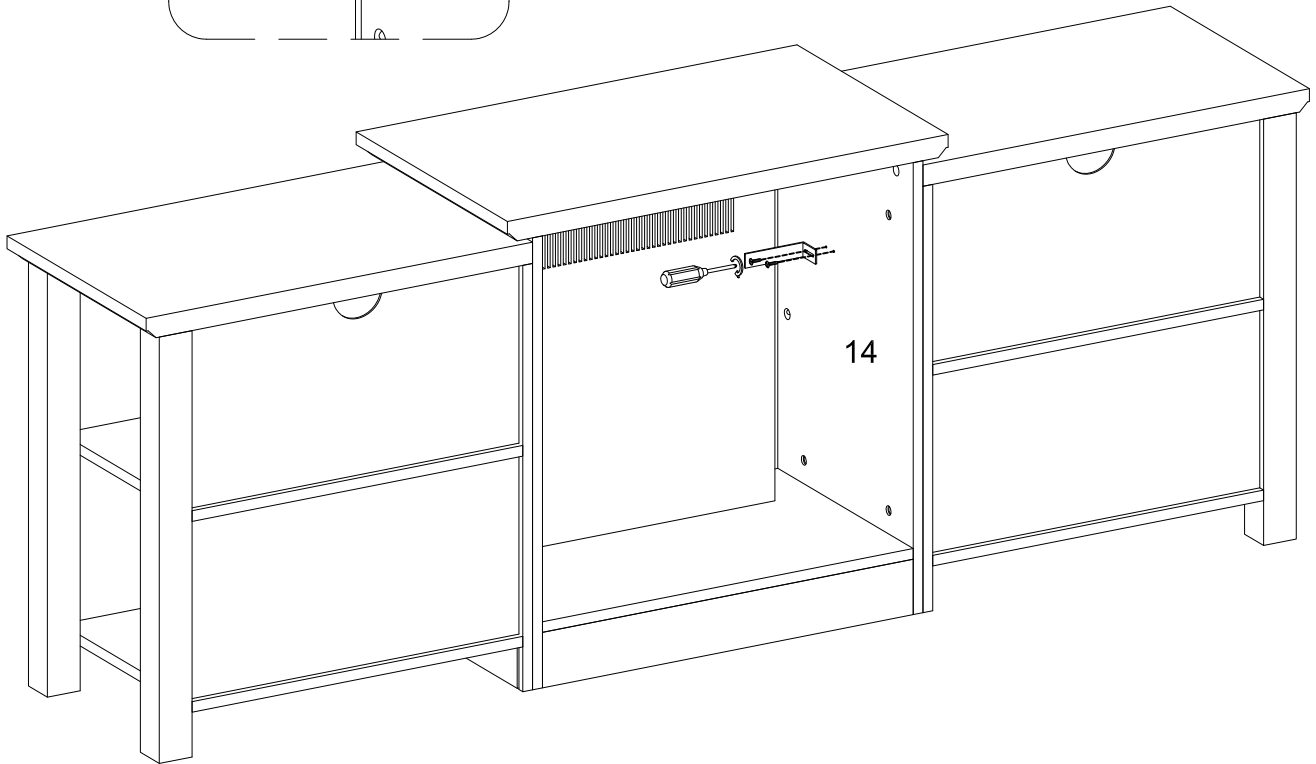
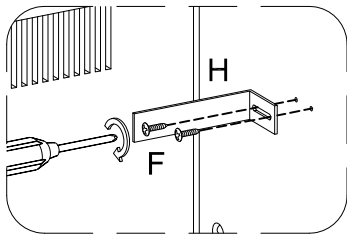
Using screw (N) secure plastic wedge (M) into parts (23,24) with Philips head screwdriver as per diagram.

Step 22



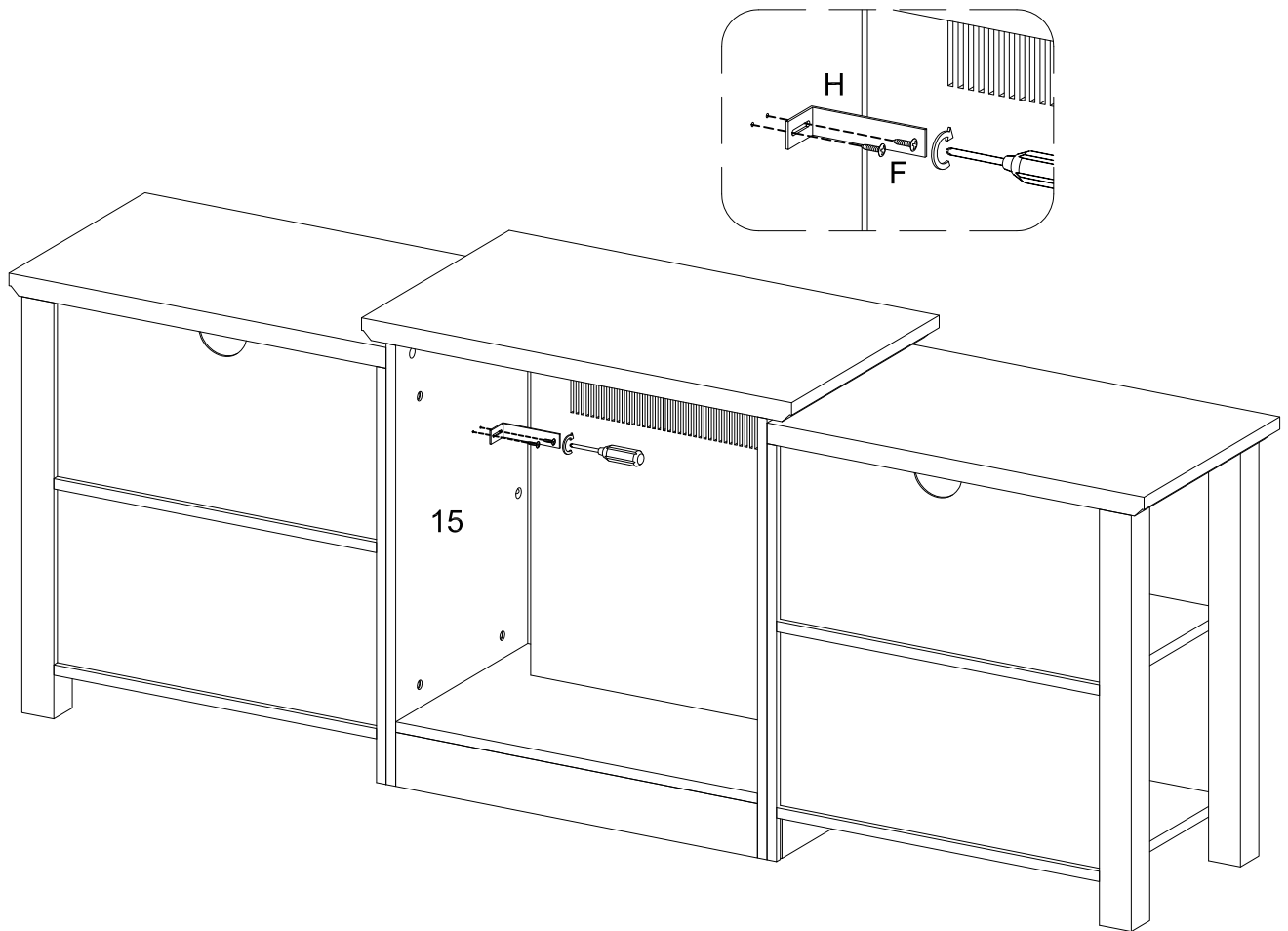
Put fireplace insert as per diagram.

Step 23



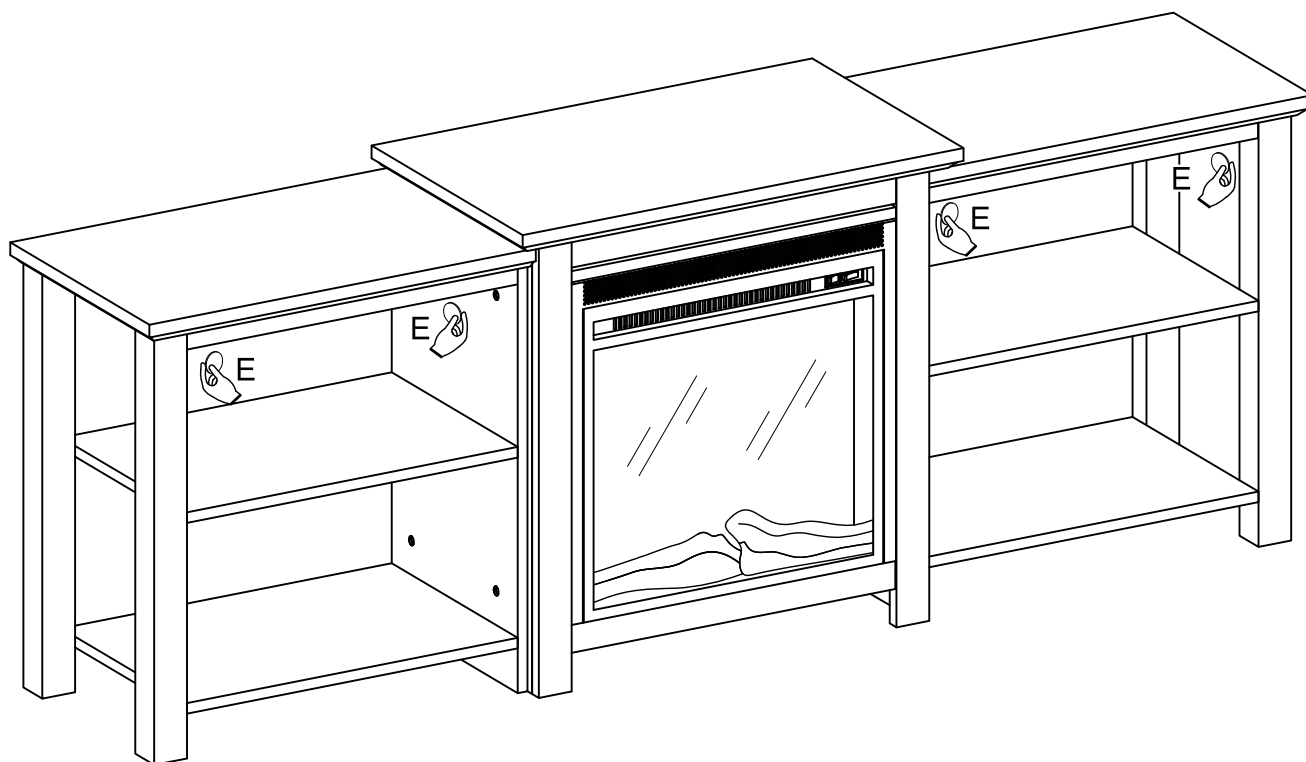
Using screw (F) secure L shape bracket (H) to part (14) with Philips head screwdriver as per diagram.

Step 24



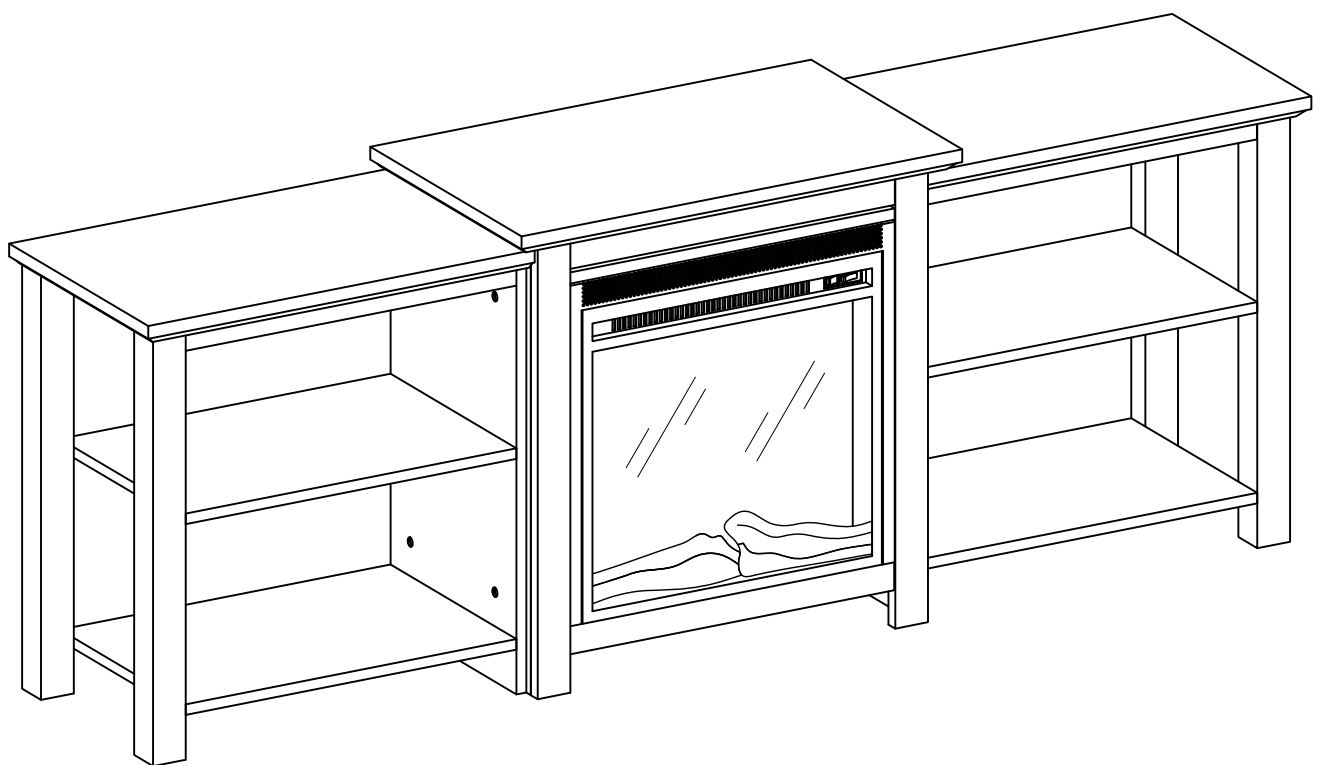
Using screw (F) secure L shape bracket (H) to part (15) with Philips head screwdriver as per diagram.

Step 25



Place sticker (E) cover the holes as per diagram.

Step 26



Final Assembly